

NOTICE OF FILING

This document was lodged electronically in the FEDERAL COURT OF AUSTRALIA (FCA) on 18/07/2021 7:15:22 PM AEST and has been accepted for filing under the Court's Rules. Details of filing follow and important additional information about these are set out below.

Details of Filing

| | |
|------------------|--|
| Document Lodged: | Statement of Agreed Facts |
| File Number: | NSD136/2021 |
| File Title: | ALLIANZ AUSTRALIA INSURANCE LIMITED (ACN 000 122 850) v THE STAGE SHOP PTY LTD (FORMERLY VISINTIN PTY LTD) ACN 114 449 571 |
| Registry: | NEW SOUTH WALES REGISTRY - FEDERAL COURT OF AUSTRALIA |



Sia Lagos

Dated: 21/07/2021 2:47:20 PM AEST

Registrar

Important Information

As required by the Court's Rules, this Notice has been inserted as the first page of the document which has been accepted for electronic filing. It is now taken to be part of that document for the purposes of the proceeding in the Court and contains important information for all parties to that proceeding. It must be included in the document served on each of those parties.

The date and time of lodgment also shown above are the date and time that the document was received by the Court. Under the Court's Rules the date of filing of the document is the day it was lodged (if that is a business day for the Registry which accepts it and the document was received by 4.30 pm local time at that Registry) or otherwise the next working day for that Registry.



Statement of Agreed Facts

No. NSD132-137; 144-145 of 2021

Federal Court of Australia

District Registry: New South Wales

Division: General

1. **Swiss Re International SE, Australia Branch v LCA Marrickville Pty Ltd – NSD132/2021**
2. **Insurance Australia Limited v Meridian Travel (Vic) Pty Ltd – NSD133/2021**
3. **Insurance Australia Limited v The Taphouse Townsville Pty Ltd – NSD134/2021**
4. **Allianz Australia Insurance Limited v Mayberg Pty Ltd – NSD135/2021**
5. **Allianz Australia Insurance Limited v The Stage Shop Pty Ltd (formerly Visintin Pty Ltd) – NSD136/2021**
6. **Chubb Insurance Australia Limited v Philip Waldeck – NSD137/2021**
7. **Guild Insurance Limited v Gym Franchises Australia Pty Ltd (t/as Reinvigr8 & Fitness 24/7) and Douglas Reason – NSD144/2021**
8. **Guild Insurance Limited v Dr Jason Michael (t/as Illawarra Paediatric Dentistry) – NSD145/2021**

I FACTS COMMON TO ALL PROCEEDINGS

Nature of COVID-19

COVID-19 in Australia

- 1 On 31 December 2019, the World Health Organisation (**WHO**) was informed of a series of cases of 'pneumonia of unknown etiology' detected in Wuhan, Hubei Province, China.
- 2 On 9 January 2020, the WHO announced that initial information about the cases of pneumonia in Wuhan provided by Chinese authorities pointed to a coronavirus as a possible pathogen causing this cluster. 'Severe acute respiratory syndrome coronavirus 2' (**SARS-CoV-2**) is the infective agent that causes COVID-19. SARS-CoV-2 is an organism.
- 3 On 19 January 2020, the first person with COVID-19 entered Australia. This was announced on 25 January 2020.
- 4 On 21 January 2020, "Human coronavirus with pandemic potential" was determined to be a listed human disease under the *Biosecurity Act 2015* (Cth).
- 5 From 6 February 2020, "Human coronavirus with pandemic potential" has been listed on the "National Notifiable Disease List" under the *National Health Security Act 2007* (Cth). COVID-19 is the name given to the disease and SARS-CoV-2 is the name given to the virus that causes the disease.
- 6 On 11 March 2020, the WHO described COVID-19 as a pandemic.

Virology of COVID-19

- 7 People with COVID-19 may be highly infectious before their symptoms show. Even people with mild or no symptoms can spread COVID-19.
- 8 On 14 May 2020, the Australian Health Protection Principal Committee about COVID-19 made a statement which provided: 'The median incubation period for COVID-19 is 4.9 – 7 days, with a range of 1 – 14 days'. Most people who are infected will develop symptoms within 14 days of infection.'
- 9 The technical supplement to the *COVID-19 Australia: Epidemiology report* (updated 10 June 2021), published by the Commonwealth Department of Health's Office of Health Protection, states that: 'The median incubation period of COVID-19 is 5-6 days, ranging from 1 to 14 days. The infectious period remains uncertain; however, it is estimated to be from 48 hours before symptoms develop until two weeks after symptom onset.'
- 10 There is presently no cure for COVID-19. From 25 January 2020 when the COVID-19 was first detected in Australia there was no vaccine for COVID-19. A vaccination program commenced in Australia on 22 February 2021 and is ongoing.

Transmission of COVID-19

- 11 The COVID-19 virus spreads primarily through the small liquid particles expelled by a person infected with COVID-19 when they cough, sneeze, speak, sing, or breathe heavily.
- 12 The WHO has reported that SARS-CoV-2 spreads mainly between people who are in close contact with each other, typically within 1 metre (short-range). However, the virus can also spread in poorly ventilated and/or crowded indoor settings, where people tend to spend longer periods of time. This is because aerosols remain suspended in the air or travel farther than 1 metre (long-range).
- 13 A person can become infected with COVID-19 if they inhale or ingest a 'sufficient load' of these liquid particles to cause infection, which can occur through:
 - (a) close contact with an infectious person; or
 - (b) contact with droplets from an infected person's cough or sneeze; or
 - (c) touching objects or surfaces that have droplets from an infected person and then touching their mouth or face.

Reproduction number of COVID-19

- 14 The reproduction number, or ' R_0 ' value, is a measure for the degree of transmissibility of contagious diseases within the community (**R Value**). The R Value reflects the average number of people who are likely to contract a contagious disease from another person with the contagious disease within a particular sample population.
- 15 If the R Value of a contagious disease is greater than 1, then the infection is considered to be growing or spreading. If the R Value of a contagious disease is less than 1, then the infection is considered to be shrinking.
- 16 **{Not agreed: the Insurers dispute this paragraph}** COVID-19 has a potential R Value ranging from 2 to 4. That is, on average, each person infected with COVID-19 infects 2 to 4 more people. The R value for confined settings is at the higher end of this range.
- 17 [not used].

COVID-19 variants

- 18 Coronaviruses mutate frequently and new variants of the SARS-CoV-2 virus are emerging globally.
- 19 In Australia, the following variants of the SARS-CoV-2 virus have been identified as 'variants of concern':
 - (a) the Alpha variant (B.1.1.7), which was first detected in the UK in September 2020 and is estimated on the basis of preliminary data (not fully established) to be 0.43 to

0.9 times more transmissible than the previously circulating strain of the virus. The UK variant was first detected in Australia in New South Wales on or about 21 December 2020;

- (b) the Beta variant (B.1.351), which was first detected in South Africa in May 2020 and is estimated on the basis of preliminary data (not fully established) to be 2.5 times more transmissible than the previously circulating strain of the virus. The South African variant was first detected in Australia in Brisbane on 22 December 2020; and
- (c) the Gamma variant (P.1), which was first detected in Brazil in November 2020 and is estimated on the basis of preliminary data (not fully established) to be 1.4 to 2.2 times more transmissible than the previously circulating strain of the virus. The Brazilian variant was first detected in Australia in New South Wales on or about 6 March 2021.
- (d) the Delta variant (B.1.617.2) was first detected in India in October 2020, and first detected in Australia in Victoria on or about 4 June 2021. The Delta variant is associated with an estimated transmission on the basis of preliminary data (not fully established) equivalent to the Alpha variant.

Prevalence of COVID-19

- 20 The Federal Government has developed a series of national guidelines in consultation with the Communicable Diseases Network Australia. The purpose of the guidelines is to provide nationally consistent advice and guidance to public health units in responding to a notifiable disease event. The guidelines capture the knowledge of experienced professionals, built on past research efforts, and provide advice on best practice based upon the best available evidence at the time of completion.
- 21 The *CDNA National Guidelines for Public Health Units* states that a "confirmed case" requires laboratory definitive evidence (and the case is not classified as a "historical case" as defined below). Laboratory definitive evidence for detecting COVID-19 in a person includes:
 - 1. *Detection of SARS-CoV-2 by nucleic acid testing;*
 - OR
 - 2. *Isolation of SARS-CoV-2 in cell culture, with confirmation using a nucleic acid test;*
 - OR
 - 3. *SARS-CoV-2 IgG seroconversion or a four-fold or greater increase in SARS-CoV-2 antibodies of any immunoglobulin subclass including 'total' assays in acute and convalescent sera, in the absence of vaccination.*
- 22 The detection of a "historical case" of COVID-19 in a person requires laboratory suggestive evidence supported by either:

- (a) previous (prior to the past 14 days) clinical evidence; or
- (b) previous (prior to the past 14 days) epidemiological evidence:

Laboratory suggestive evidence:

1. *Detection of SARS-CoV-2 by polymerase chain reaction (PCR) on two specimens at least 24 hours apart with results suggestive of a historical infection on both specimens AND detection of IgG or total antibody, in the absence of vaccination;*

OR

2. *Negative SARS-CoV-2 PCR AND detection of IgG or total antibody, in the absence of vaccination;*

OR

3. *Detection of SARS-CoV-2 by PCR with initial test results suggestive of a historical infection AND a subsequent PCR is negative, taken at least 24 hours apart.*

Clinical evidence:

Fever ($\geq 37.5^{\circ}\text{C}$) or history of fever (e.g. night sweats, chills) OR acute respiratory infection (e.g. cough, shortness of breath, sore throat) OR loss of smell or loss of taste.

Epidemiological evidence:

- *Close contact with a confirmed case*
- *International travel*
- *Workers supporting designated COVID-19 quarantine and isolation services*
- *International border staff*
- *Air and maritime crew*
- *Health, aged or residential care workers and staff with potential COVID-19 patient contact*
- *People who have been in a setting where there is a COVID-19 case*
- *People who have been in areas with recent local transmission of SARS-CoV-2*

- 23 A "suspected case" is defined as a person who meets the above clinical and epidemiological criteria (as outlined in paragraph 22). However, in relation to a "suspected case", the Guidelines additionally provide as follows:

Clinical and public health judgement should be used in assessing if hospitalised patients with non-specific signs of infection and/or patients who do not meet the clinical or epidemiological criteria should be considered suspect cases.

- 24 A "primary close contact" is defined as a person who has:

- (a) had face-to-face contact of any duration or shared a closed space (for at least 1 hour) with a confirmed case during their infectious period (from 48 hours before onset of symptoms until the case is no longer infectious);
- (b) the exposure may be any duration depending on risk setting such as: transmission has already been proven to have readily occurred, there are concerns about

adequate air exchange in an indoor environment or concerns about the nature of contact in the place of exposure (e.g. the contact has been exposed to shouting or singing);

- (c) been exposed to a setting or exposure site where there is a high prevalence of infection e.g. a country where there is community transmission of COVID-19, or unprotected exposure in a quarantine hotel for returned travellers; or
 - (d) been in a venue where transmission has been demonstrated to have occurred during the time frame in which the transmission would be expected to have occurred.
- 25 A "casual contact" is defined as a person who has been in the same setting with a confirmed case in their infectious period, but does not meet the definition of a primary close contact.
- 26 A "secondary close contact" (also known as a close contact of a close contact) is defined as a person who has:
- (a) had face-to-face contact in any setting with a primary close contact from 24 hours after the primary contact's exposure to the case; and
 - (b) the exposure to the primary close contact may be any duration depending on risk setting such as: transmission has already been proven to have readily occurred, there are concerns about adequate air exchange in an indoor environment or concerns about the nature of contact in the place of exposure (e.g. the contact has been exposed to shouting or singing).
- 27 A primary close contact is required to quarantine for 14 days, be advised to monitor their health and tested during the quarantine period. A casual contact should provide information about their exposure and monitor their symptoms. A secondary close contact may be required to quarantine depending on the circumstances.

II FACTS COMMON TO SOME PROCEEDINGS

Measures

- 28 Measures promulgated at the Commonwealth level are at **Annexure A**.
- 29 Measures promulgated at the New South Wales level are at **Annexure B**.
- 30 Measures promulgated at the Victorian level are at **Annexure C**.
- 31 Measures promulgated at the Queensland level are at **Annexure D**.
- 32 [not used].
- 33 Measures promulgated at the South Australian level are at **Annexure E**.

COVID-19 cases in Australia

- 34 The relevant government departments reported the following number of COVID-19 cases on the following dates in Australia. The figures presented in the table do not distinguish between cases associated with community transmission, overseas acquisition, interstate acquisition or cases acquired or located in hospital, hotel quarantine or self-isolation.

| Total COVID-19 cases (on a cumulative basis) | | | | | |
|--|-----------|-------|--------|-------|-----|
| Date (on or about) | Australia | NSW | VIC | QLD | SA |
| 25-Jan-20 | 2 | 1 | 1 | 0 | 0 |
| 27-Jan-20 | 5 | 4 | 1 | 0 | 0 |
| 1-Mar-20 | 29 | 6 | 9 | 9 | 3 |
| 4-Mar-20 | ~70 | 21 | 10 | 11 | 5 |
| 9-Mar-20 | 80 | 54 | 17 | 15 | 7 |
| 12-Mar-20 | ~197 | 90 | 34 | 27 | 13 |
| 16-Mar-20 | ~300 | 196 | 78 | 68 | 30 |
| 23-Mar-20 | ~2,000 | 869 | 396 | 319 | 135 |
| 31-Mar-20 | ~4,200 | 2,153 | 956 | 743 | 338 |
| 30-Apr-20 | 6,735 | 3,016 | 1,361 | 1,033 | 438 |
| 31-May-20 | 7,195 | 3,095 | 1,649 | 1,058 | 440 |
| 30-Jun-20 | 7,834 | 3,189 | 2,159 | 1,067 | 443 |
| 31-Jul-20 | 16,905 | 3,756 | 10,577 | 1,083 | 450 |
| 31-Aug-20 | 25,746 | 4,050 | 19,080 | 1,122 | 463 |
| 30-Sep-20 | 27,078 | 4,224 | 20,169 | 1,157 | 468 |
| 31-Oct-20 | 27,590 | 4,421 | 20,347 | 1,171 | 501 |
| 30-Nov-20 | 27,904 | 4,577 | 20,345 | 1,202 | 562 |
| 31-Dec-20 | 28,408 | 4,923 | 20,368 | 1,253 | 576 |
| 31-Jan-21 | 28,811 | 5,104 | 20,448 | 1,310 | 597 |
| 28-Feb-21 | 28,970 | 5,177 | 20,481 | 1,329 | 613 |
| 31-Mar-21 | 29,304 | 5,291 | 20,484 | 1,467 | 655 |
| 30-Apr-21 | 29,801 | 5,477 | 20,518 | 1,559 | 724 |

COVID-19 case data in New South Wales

- 35 The NSW government publishes data (generated in a spreadsheet format) of COVID-19 cases by notification date, postcode, local health district, local government area and likely source of infection.

- 36 The data is for confirmed COVID-19 cases only based on location of usual residence, not necessarily where the virus was contracted.
- 37 The definition of a confirmed case is a person who tests positive to a validated specific SARS-CoV-2 nucleic acid test or has the virus identified by electron microscopy or viral culture, at a reference laboratory.

COVID-19 case data in Victoria

- 38 The Victorian government publishes data (generated in a spreadsheet format) of confirmed COVID-19 cases by date, postcode, local government area and acquired source. A confirmed case is defined as "*a person who has a positive laboratory test for coronavirus (COVID-19)*".
- 39 Residential location postcode is the address provided by a person during contact tracing. This is not where they were infected. It may not be where the case currently resides (for example they might be in a hospital). The postcode of the case does not reflect where a person was infected. The published data includes as the "diagnosis date" for each confirmed case the date of the laboratory test for COVID-19.
- 40 The data is sourced through contact tracing and management of the COVID-19 outbreak. The following data sources are also used:
- (a) Australian Bureau of Statistics (**ABS**) data is used to calculate a rate by population for postcodes and local government areas;
 - (b) local government area population data is sourced from the ABS Estimated Resident Population (ERP) for 2019; and
 - (c) postcode population data is sourced from the ABS 2016 census figures.

COVID-19 case data in Queensland

- 41 The Queensland government publishes data of confirmed COVID-19 cases by Hospital and Health Service (**HHS**) region and by local government area. Total case numbers include both confirmed and probable COVID-19 cases as per the national case definition. Probable cases are based on serology results as well as clinical and epidemiological criteria that indicates a previous infection.
- 42 In most cases, the HHS case numbers are derived using the residential address when that case was notified, but alternatively may have been derived from the location of the Public Health Unit managing the case, or the location where the test was ordered. It does not necessarily reflect the current location of a case or where the infection was acquired.
- 43 Confirmed cases of COVID-19 are published by the Queensland Department of Health via media releases. Media releases from 30 January 2020 onward identify newly confirmed

positive COVID-19 cases in Queensland. Media releases from late March 2020 identify the total number of confirmed cases by HHS region on a cumulative basis.

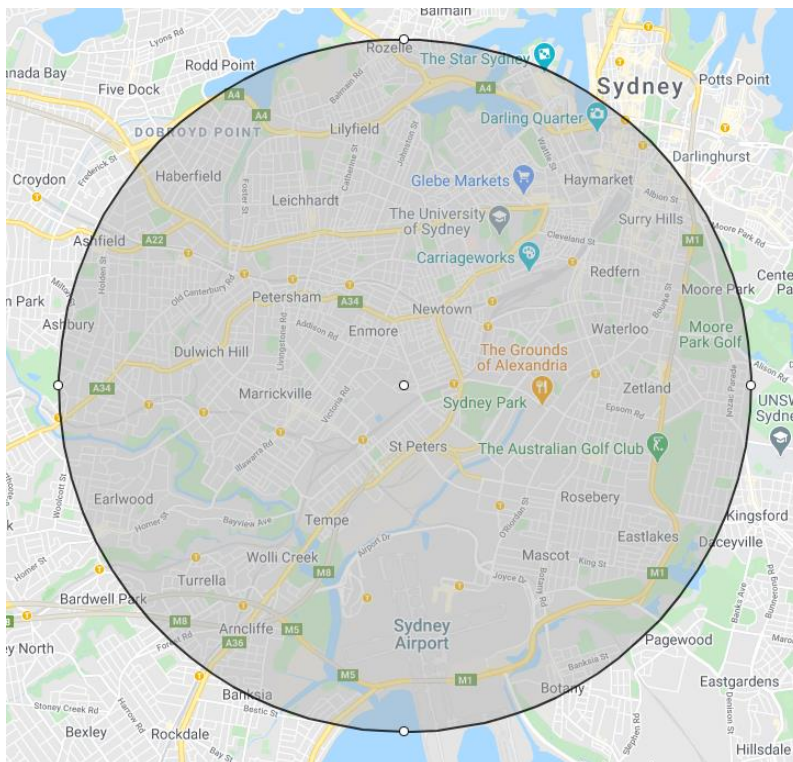
COVID-19 case data in South Australia

- 44 The South Australian government publishes data of confirmed COVID-19 cases. The South Australian government also publishes total cases by local government area. It also publishes media releases identifying new cases. No further information is provided on the South Australian government website explaining the case data.

III FACTS SPECIFIC TO EACH PROCEEDING

LCA Marrickville

- 45 [not used].
- 46 LCA's shop is located at Shop 45, Marrickville Metro Shopping Centre, 20 Smidmore Street, Marrickville NSW 2204.
- 47 **{LCA Marrickville disputes the relevance of this fact}** LCA is not aware, nor was it ever made aware by any public body or health authority, of any person infected with COVID-19 having entered or attended the Marrickville Metro Shopping Centre prior to 30 June 2020.
- 48 The following diagram shows a 5 kilometre radius around Shop 45, Marrickville Metro Shopping Centre, 20 Smidmore Street, Marrickville, with that address being depicted by a white dot in the centre of the radius:

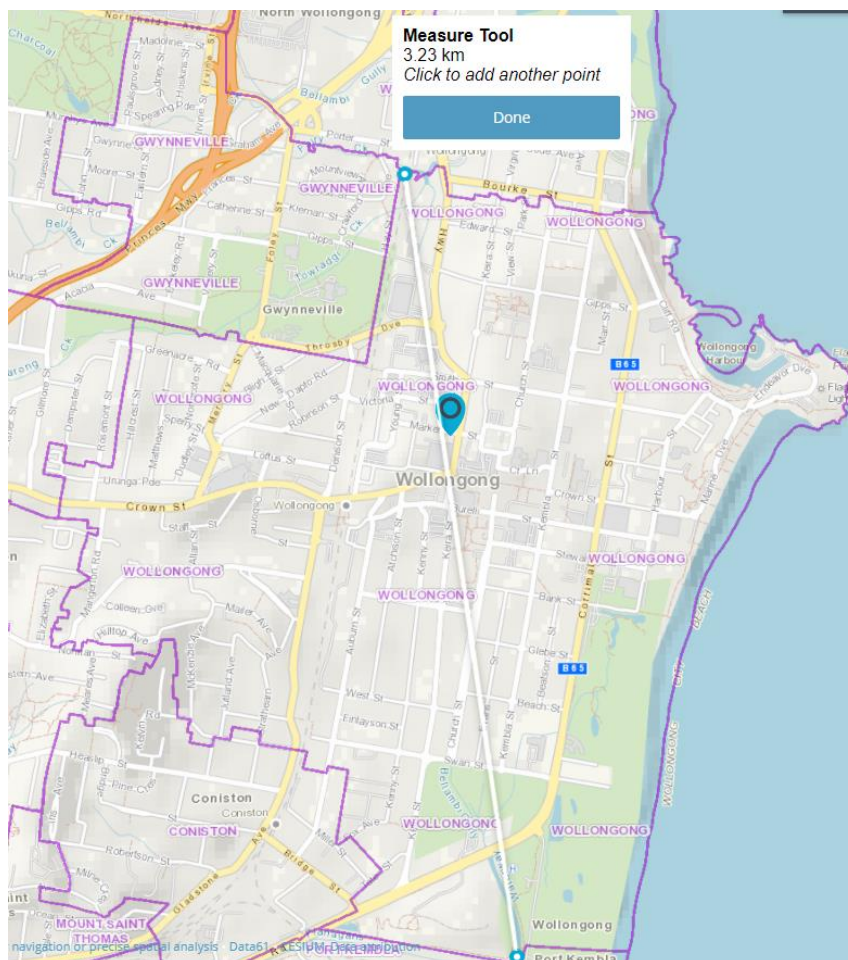


within the radius, or in postcodes wholly within the radius. The data does not necessarily record the location of the confirmed case or the location of transmission.

| Date | Total cases (cumulative) | | | |
|-----------|--------------------------|-------------------------------|--------------------------------|--|
| | NSW | LGAs partly within the radius | Postcodes wholly within radius | |
| 25-Jan-20 | 3 | 0 | 0 | |
| 27-Jan-20 | 4 | 1 | 0 | |
| 4-Mar-20 | 21 | 5 | 1 | |
| 9-Mar-20 | 54 | 8 | 2 | |
| 12-Mar-20 | 90 | 13 | 2 | |
| 16-Mar-20 | 196 | 32 | 5 | |
| 23-Mar-20 | 869 | 132 | 19 | |
| 31-Mar-20 | 2153 | 320 | 55 | |
| 30-Apr-20 | 3018 | 477 | 83 | |
| 31-May-20 | 3083 | 481 | 83 | |
| 30-Jun-20 | 3195 | 494 | 85 | |
| 31-Jul-20 | 3580 | 548 | 90 | |
| 31-Aug-20 | 3872 | 584 | 95 | |
| 30-Sep-20 | 4034 | 615 | 97 | |
| 31-Oct-20 | 4232 | 641 | 98 | |
| 30-Nov-20 | 4392 | 659 | 104 | |
| 31-Dec-20 | 4740 | 696 | 110 | |
| 31-Jan-21 | 4918 | 722 | 112 | |
| 28-Feb-21 | 4991 | 734 | 114 | |
| 31-Mar-21 | 5105 | 756 | 114 | |
| 30-Apr-21 | 5291 | 766 | 115 | |

Dr Michael

- 52 The terms and conditions set out in the Product Disclosure Statement for the Dentists Business Insurance Policy issued to Dr Michael comprised Guild's standard terms and conditions and were not the subject of negotiation between Dr Michael and Guild.
- 53 Dr Michael's policy schedule states the "Business Premises Address" is Level 2, 172-174 Keira Street, Wollongong NSW 2500 (**Dr Michael's Premises**).
- 54 **{Dr Michael disputes the relevance of this fact}** Dr Michael was not, at any relevant time informed by a competent government or statutory authority that there had been an occurrence of COVID-19 at Dr Michael's Premises or the discovery of SARS-CoV-2 at Dr Michael's Premises.
- 55 Dr Michael was not, at any relevant time aware of an occurrence of COVID-19 at Dr Michael's Premises or the discovery of SARS-CoV-2 at Dr Michael's Premises.
- 56 **{Guild disputes the relevance of these facts}** The following is a map of the boundaries of Wollongong NSW 2500, with the location of the premises shown by a blue marker:



- 57 **{Not agreed: Guild disputes the inclusion of these facts}** The spreadsheet generated from the NSW government website (as outlined at paragraph 35 above) shows Wollongong NSW 2500 has recorded the following cases to date:

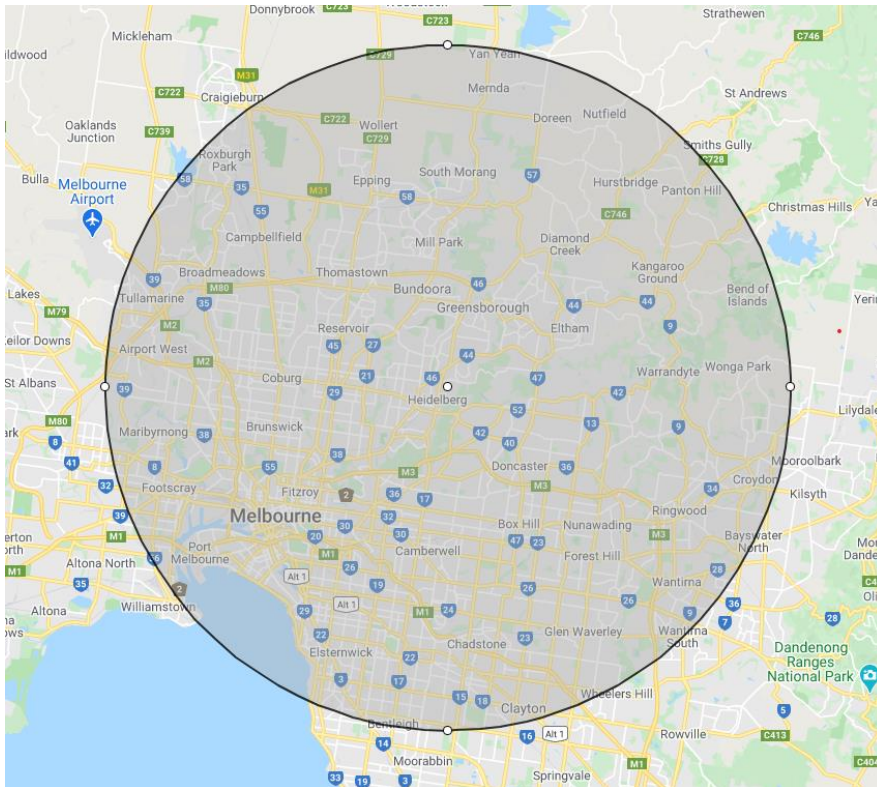
| Date | Total cases | |
|-----------|-------------|---------------|
| | NSW | Postcode 2500 |
| 20-Mar-20 | 449 | 1 |
| 22-Mar-20 | 692 | 2 |
| 22-Mar-20 | 692 | 3 |
| 22-Mar-20 | 692 | 4 |
| 22-Mar-20 | 692 | 5 |
| 23-Mar-20 | 869 | 6 |
| 23-Mar-20 | 869 | 7 |
| 24-Mar-20 | 1061 | 8 |
| 26-Mar-20 | 1452 | 9 |
| 29-Mar-20 | 1932 | 10 |
| 30-Mar-20 | 2022 | 11 |
| 30-Mar-20 | 2022 | 12 |
| 31-Mar-20 | 2153 | 13 |
| 1-Apr-20 | 2277 | 14 |
| 3-Apr-20 | 2475 | 15 |
| 31-Jul-20 | 3582 | 16 |
| 26-Oct-20 | 4209 | 17 |
| 26-Oct-20 | 4209 | 18 |
| 26-Oct-20 | 4209 | 19 |
| 6-Nov-20 | 4268 | 20 |
| 18-Nov-20 | 4326 | 21 |
| 22-Nov-20 | 4353 | 22 |
| 29-Dec-20 | 4721 | 23 |
| 29-Dec-20 | 4721 | 24 |
| 2-Jan-21 | 4766 | 25 |
| 30-Apr-21 | 5293 | 26 |
| 30-Apr-21 | 5293 | 27 |

Meridian

58 [not used].

59 The policy schedule for Meridian Travel (Vic) Pty Ltd (**Meridian**) states "Situation 1" is 159 Burgundy Road, Heidelberg VIC 3084. This appears to be an error, as Meridian is located at 159 Burgundy Street, Heidelberg Victoria 3084. The Meridian Policy refers to an "outbreak ... occurring within a 20 kilometre radius of the Situation".

60 A 20 kilometre radius around Meridian's premises is shown in the following diagram, with the location of the premises being depicted by a white dot in the centre of the radius:



61 Local government areas and postcodes that fall wholly or partly within the above radius are listed in **Annexure H**.

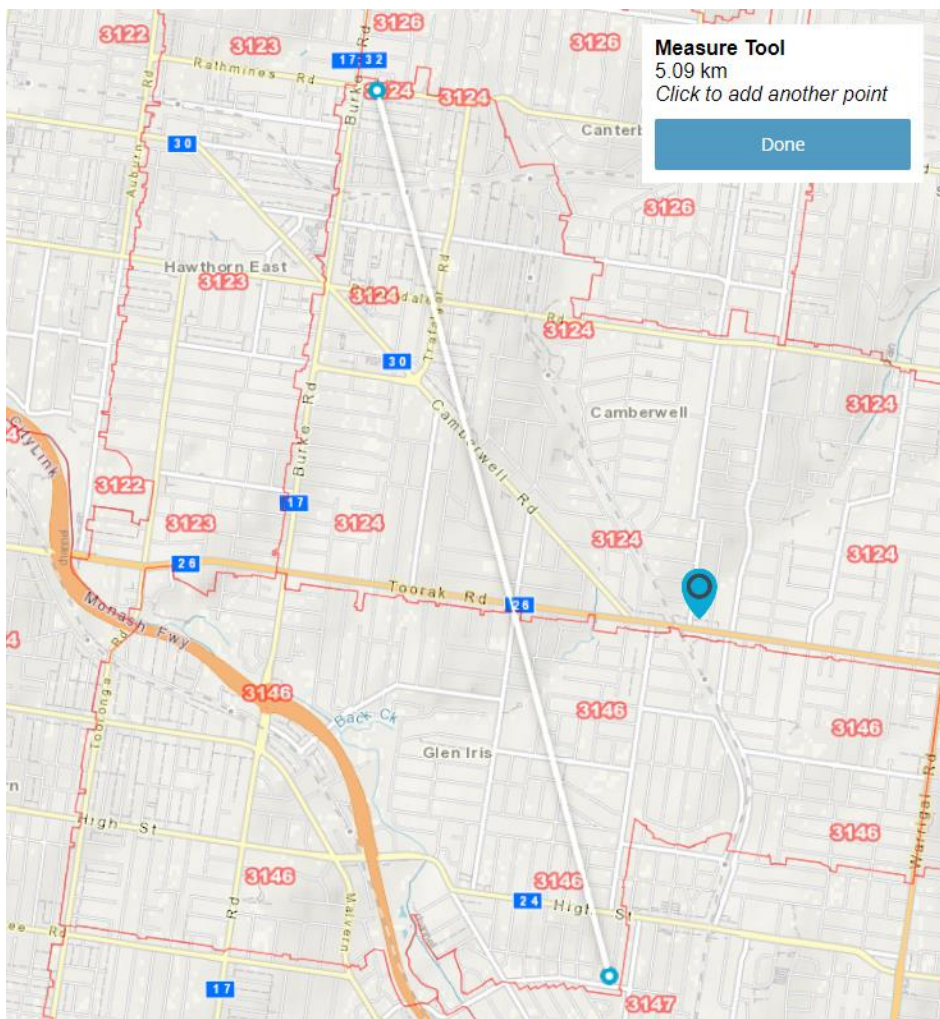
62 A subset of the spreadsheet generated from the Victorian government website (as outlined at paragraphs 38 - 40) attributing COVID-19 cases to the above local government areas and postcodes is at **Annexure I**.

63 The following table shows the number of COVID-19 cases attributed to Victoria and certain areas in Victoria by the Victorian Department of Health and Human Services on certain dates identified from the above spreadsheet. It shows a cumulative total of historical and current cases as at each date. Prior to 31 March 2020, a sample selection of dates has been taken to demonstrate the escalation in case numbers:

| Date | Victoria | LGAs wholly within radius | LGAs partly within radius | Postcodes wholly within radius | Postcodes partly within radius |
|-----------|----------|---------------------------|---------------------------|--------------------------------|--------------------------------|
| 25-Jan-20 | 1 | 0 | 1 | 1 | 0 |
| 30-Jan-20 | 3 | 1 | 2 | 2 | 1 |
| 22-Feb-20 | 6 | 1 | 4 | 3 | 2 |
| 25-Feb-20 | 7 | 1 | 5 | 4 | 2 |
| 1-Mar-20 | 9 | 2 | 5 | 5 | 2 |
| 11-Mar-20 | 24 | 12 | 6 | 16 | 2 |
| 12-Mar-20 | 34 | 18 | 7 | 23 | 2 |
| 13-Mar-20 | 49 | 25 | 14 | 33 | 6 |
| 15-Mar-20 | 61 | 29 | 19 | 38 | 10 |
| 16-Mar-20 | 78 | 36 | 28 | 48 | 13 |
| 23-Mar-20 | 396 | 167 | 114 | 215 | 32 |
| 31-Mar-20 | 956 | 374 | 259 | 466 | 88 |
| 30-Apr-20 | 1365 | 522 | 368 | 652 | 130 |
| 31-May-20 | 1654 | 576 | 490 | 741 | 191 |
| 30-Jun-20 | 2237 | 731 | 773 | 971 | 341 |
| 31-Jul-20 | 10729 | 3291 | 4383 | 4515 | 2039 |
| 31-Aug-20 | 19096 | 5104 | 7953 | 7243 | 3510 |
| 30-Sep-20 | 20176 | 5325 | 8408 | 7528 | 3768 |
| 31-Oct-20 | 20343 | 5382 | 8480 | 7610 | 3802 |
| 30-Nov-20 | 20343 | 5382 | 8480 | 7610 | 3802 |
| 31-Dec-20 | 20374 | 5385 | 8482 | 7613 | 3802 |
| 31-Jan-21 | 20448 | 5397 | 8499 | 7620 | 3806 |
| 28-Feb-21 | 20481 | 5398 | 8507 | 7631 | 3809 |
| 31-Mar-21 | 20484 | 5398 | 8510 | 7631 | 3809 |
| 30-Apr-21 | 20518 | 5399 | 8510 | 7632 | 3809 |

Waldeck

- 64 Chubb drafted the terms of the Product Disclosure Statement which comprises the wording of the Waldeck Policy. At all relevant times, Mr Waldeck was represented and advised by his insurance broker, PKC Group General Insurance Solutions Pty Ltd (**PKC Group**), in relation to the placement of the Waldeck Policy on his behalf.
- 65 PKC Group is an Authorised Representative of Resilium Insurance Broking Pty Ltd and was, at all relevant times, a general insurance broker.
- 66 [not used].
- 67 Mr Waldeck's policy schedule states that the "Insured Location" is 1197 Toorak Road, Camberwell VIC 3124. The following is a map showing the boundaries of postcodes 3124 and 3146. The location of Mr Waldeck's premises is shown with a blue marker:



- 68 The spreadsheet generated from the Victorian government website (as outlined at paragraphs 38 - 40) shows that the following running total of cases have been recorded for postcodes 3124 and 3146 to 4 January 2021:

| Date | Total cases | | |
|-----------|-------------|---------------|---------------|
| | VIC | Postcode 3124 | Postcode 3146 |
| 9-Mar-20 | 17 | 1 | - |
| 10-Mar-20 | 19 | 2 | - |
| 19-Mar-20 | 178 | 3 | 1 |
| 20-Mar-20 | 221 | 4 | |
| 20-Mar-20 | 221 | 5 | |
| 20-Mar-20 | 221 | 6 | |
| 22-Mar-20 | 340 | | 2 |
| 27-Mar-20 | 678 | 7 | |
| 28-Mar-20 | 756 | | 3 |
| 30-Mar-20 | 898 | | 4 |
| 30-Mar-20 | 898 | | 5 |
| 31-Mar-20 | 956 | | 6 |
| 4-Apr-20 | 1129 | | 7 |
| 8-Apr-20 | 1225 | 8 | |
| 4-May-20 | 1421 | | 8 |
| 18-May-20 | 1572 | 9 | |
| 26-May-20 | 1618 | | 9 |
| 19-Jun-20 | 1818 | 10 | |
| 27-Jun-20 | 2031 | | 10 |
| 6-Jul-20 | 2806 | | 11 |
| 9-Jul-20 | 3220 | | 12 |
| 12-Jul-20 | 3933 | 11 | |
| 12-Jul-20 | 3933 | 12 | |
| 13-Jul-20 | 4181 | 13 | |
| 16-Jul-20 | 5073 | 14 | |
| 19-Jul-20 | 5883 | 15 | |
| 19-Jul-20 | 5883 | 16 | |
| 19-Jul-20 | 5883 | 17 | |
| 20-Jul-20 | 6224 | 18 | |
| 21-Jul-20 | 6660 | | 13 |
| 21-Jul-20 | 6660 | | 14 |
| 22-Jul-20 | 7034 | | 15 |
| 24-Jul-20 | 7654 | | 16 |
| 24-Jul-20 | 7654 | | 17 |
| 25-Jul-20 | 8062 | | 18 |
| 25-Jul-20 | 8062 | | 19 |
| 26-Jul-20 | 8554 | | 20 |
| 2-Aug-20 | 11679 | 19 | |
| 4-Aug-20 | 12769 | 20 | |
| 5-Aug-20 | 13213 | | 21 |
| 5-Aug-20 | 13213 | | 22 |
| 6-Aug-20 | 13634 | 21 | |
| 8-Aug-20 | 14463 | | 23 |
| 11-Aug-20 | 15494 | | 24 |
| 12-Aug-20 | 15750 | | 25 |
| 17-Aug-20 | 17162 | 22 | 26 |
| 25-Aug-20 | 18543 | 23 | |
| 1-Jan-21 | 20386 | 24 | |
| 1-Jan-21 | 20386 | 25 | |
| 4-Jan-21 | 20396 | 26 | |

- 69 **{Waldeck disputes the relevance of this fact}** At no time was Mr Waldeck aware, nor was he ever made aware by either his tenant or any relevant public body or health authority, of the occurrence or outbreak at the Insured Location of either a Notifiable Disease or the discovery of an organism likely to cause Notifiable Disease.

Taphouse

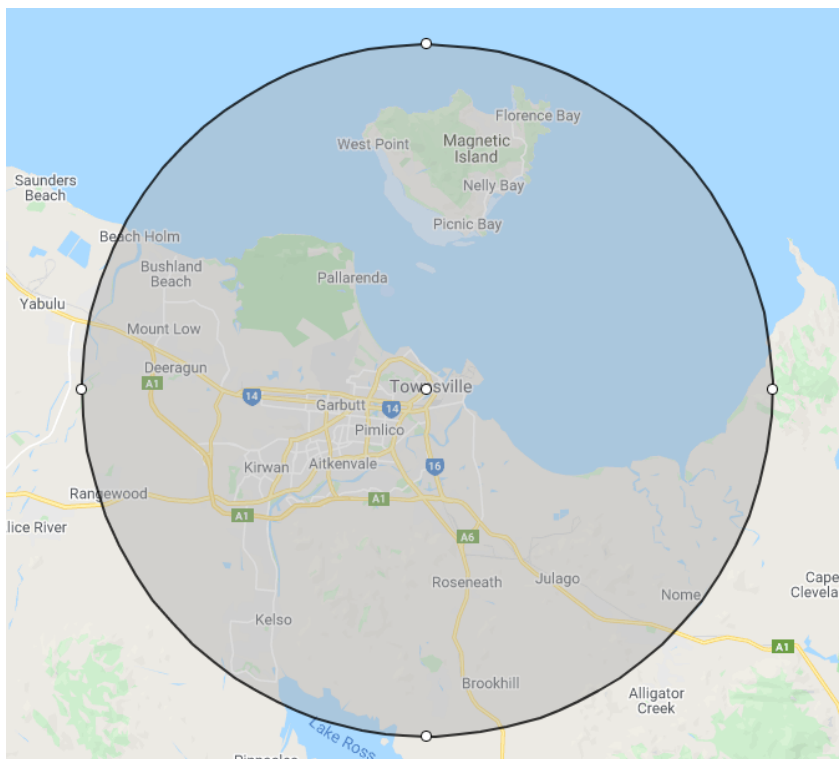
70 [not used].

71 The policy schedule for The Taphouse Townsville Pty Ltd (**Taphouse**) states "Situation 1" is Lot 4, City Lane, 373 Flinders Street, Townsville QLD 4810. The Taphouse Policy refers to "the outbreak ... occurring within a 20-kilometre radius".

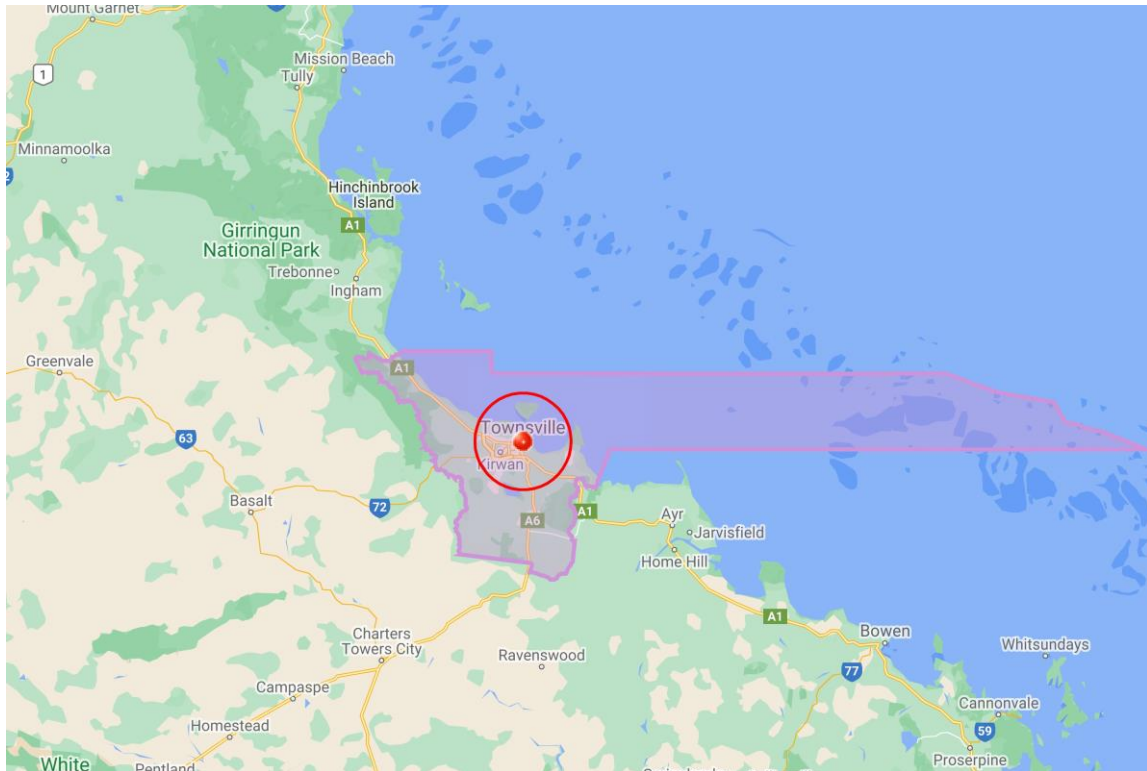
72 The applicable HHS region for Townsville is shown at **Annexure J**. The Townsville HHS region extends well beyond the city of Townsville, which has a population of approximately 178,860. For example, the Townsville HHS region includes:

- (a) Ingham – which is approximately 97km from Townsville on a straight line basis;
- (b) Charters Towers – which is approximately 108km from Townsville on a straight line basis;
- (c) Hughenden – which is approximately 326km from Townsville on a straight line basis.

73 A 20 kilometre radius around Taphouse's premises is shown in the following diagram, with the location of the premises being depicted by a white dot in the centre of the radius



74 The entirety of the area within the 20 kilometre radius around Taphouse's premises falls within the boundaries of the Townsville City Local Government Area. The following diagram shows the boundaries of the Townsville City Local Government Area and, within those boundaries, the 20 kilometre radius around Taphouse's premises (the location of the premises is depicted by a red dot in the centre of the radius):



- 75 The table below compiles COVID-19 case data that has been published on the Queensland Health website:

| Date | Total cases in Queensland | Total cases attributed to Townsville HHS (approx.) |
|-----------|---------------------------|--|
| 30-Jan-20 | 1 | 0 |
| 15-Mar-20 | 61 | 1 |
| 17-Mar-20 | 78 | 2 |
| 19-Mar-20 | 144 | 3 |
| 23-Mar-20 | 319 | 4 |
| 24-Mar-20 | 397 | 4 |
| 25-Mar-20 | 443 | 6 |
| 26-Mar-20 | 493 | 11 |
| 27-Mar-20 | 555 | 13 |
| 28-Mar-20 | 625 | 15 |
| 29-Mar-20 | 656 | 16 |
| 31-Mar-20 | 743 | 18 |
| 30-Apr-20 | 1033 | 24 |
| 31-May-20 | 1058 | 24 |
| 26-Jun-20 | 1067 | 24 |
| 7-Jul-20 | 1068 | 24 |
| 31-Jul-20 | 1083 | 24 |
| 31-Aug-20 | 1122 | 26 |
| 30-Sep-20 | 1157 | 26 |
| 31-Oct-20 | 1171 | 27 |
| 30-Nov-20 | 1202 | 27 |
| 31-Dec-20 | 1253 | 27 |
| 31-Jan-21 | 1310 | 27 |
| 28-Feb-21 | 1329 | 27 |
| 31-Mar-21 | 1467 | 27 |
| 30-Apr-21 | 1559 | 27 |

- 76 According to the data published on the Queensland Health website, as at 28 May 2021 there have been a total of 31 cases of COVID-19 attributed to the Townsville City Local Government Area, of which:
- (a) 30 are classified as 'overseas acquired';
 - (b) 1 is classified as 'interstate acquired';
 - (c) none are classified as 'locally acquired – contact known';
 - (d) none are classified as 'locally acquired – no known contact'; and
 - (e) none are classified as 'under investigation'.
- 77 **{Not agreed: Taphouse disputes these facts}** Therefore, according to the data published on the Queensland Health website that is described in the paragraph above, as at 28 May 2021:
- (a) no one has acquired COVID-19 locally within the Townsville City Local Government Area; and
 - (b) there has been no community transmission of COVID-19 within the Townsville City Local Government Area.
- 78 Queensland Health also issued a contact tracing media release on 14 October 2020, identifying that a person had travelled to the following locations in Townsville from 28 September to 1 October 2020, before that person travelled to Cairns (on 3 October 2020) and then Brisbane (on 6 October 2020) and then on to Melbourne via Canberra. The person had then tested positive for COVID-19 in Melbourne after they had been in Melbourne for three days.

| Date | Location |
|-------------------|-----------------------|
| 28 September 2020 | Hyde Park, Townsville |
| 29 September 2020 | Hyde Park, Townsville |
| 30 September 2020 | Pimlico, Townsville |
| 1 October 2020 | Hyde Park, Townsville |

- 79 The above media release also states: "Queensland Chief Health Officer Dr Jeannette Young said while the woman may have contracted COVID-19 in Melbourne, it was necessary to treat the case with an abundance of caution."

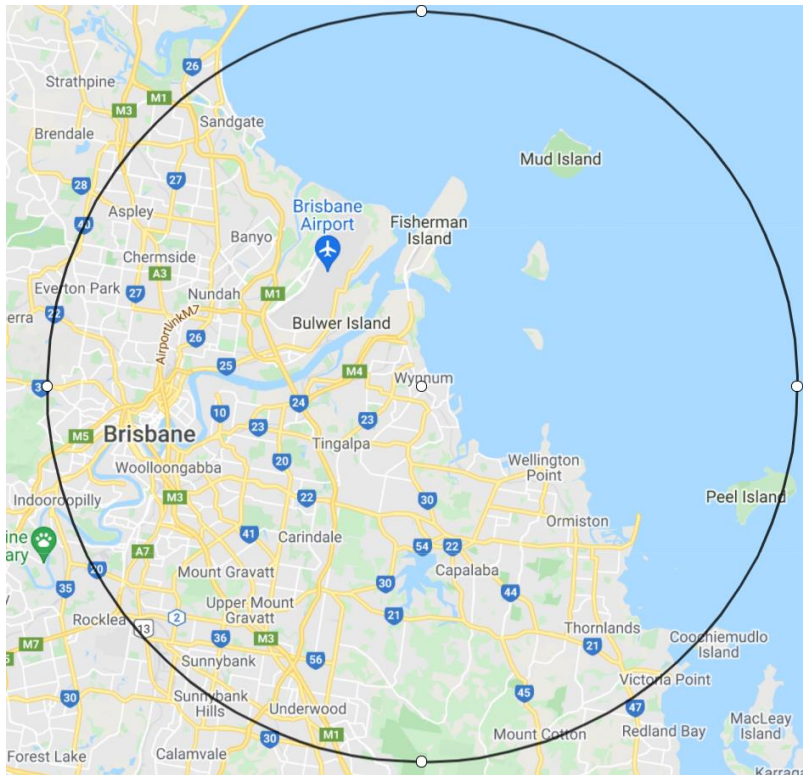
Mayberg

The Policy

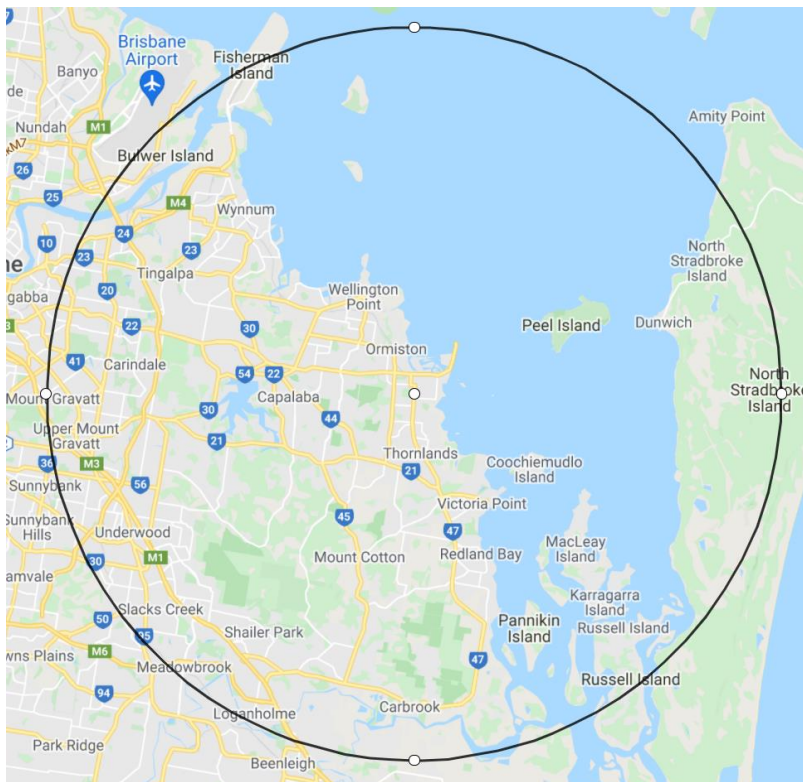
- 80 Benny & Alex Pty Ltd t/as Bayinsure (**Bayinsure**) is a Corporate Authorised Representative of Insurance Advisernet and was, at all material times, a general insurance broker.
- 81 Bayinsure, acting on behalf of Mayberg, organised for the placing of the Mayberg Policy no. 141AN06566COM (policy period 24 November 2019 to 4:00pm 24 November 2020) with Allianz.
- 82 The terms and conditions set out in the Product Disclosure Statement for the Mayberg Policy and the "*Prevention of access by a Public Authority*" endorsement in the policy schedule comprised Allianz's standard Insurance Advisernet terms and conditions and were not the subject of negotiation between Allianz and Mayberg.

Locations of the "Situations"

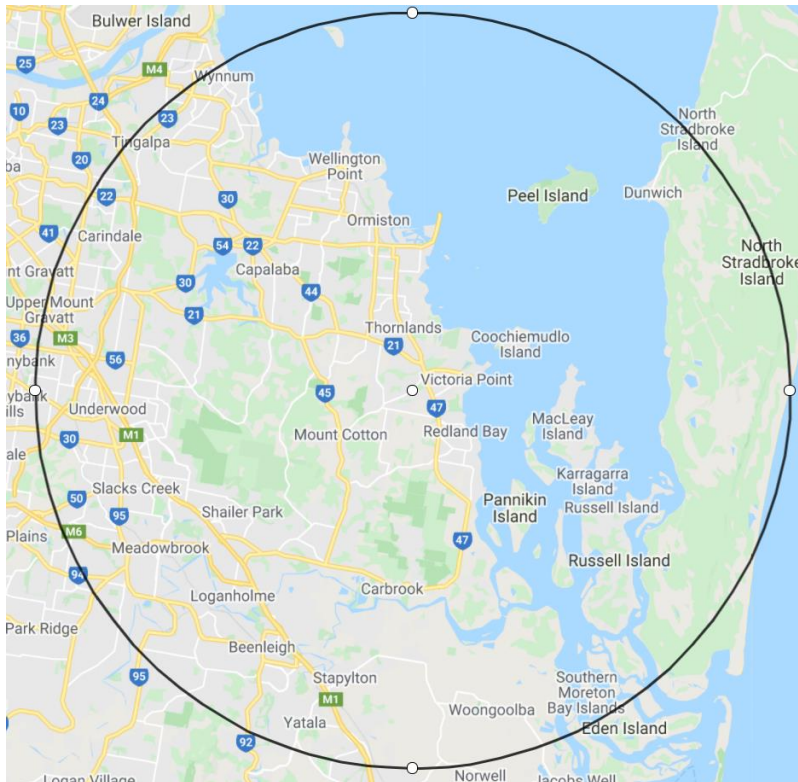
- 83 Mayberg's policy schedule states the following locations are "Situations":
- (a) Situation 1: 64 Tingal Rd, Wynnum QLD 4178;
 - (b) Situation 2: 66-68 Bloomfield St, Cleveland QLD 4163;
 - (c) Situation 3: Shop 24 2-34 Bunker Rd, Victoria Point QLD 4165; and
 - (d) Situation 4: 681 New Cleveland Rd, Gumdale QLD 4154.
- 84 The Queensland Metro North Hospital Health Service (**Metro North HHS**) is situated north of the Brisbane River and encompasses the area shown in **Annexure K**. The Queensland Metro South Hospital Health Service (**Metro South HHS**) is situated south of the Brisbane River and encompasses the area shown in **Annexure L**.
- 85 The Mayberg Policy refers to "the outbreak ... occurring within a 20-kilometre radius of Your Premises". The following diagrams show a 20 kilometre radius around each of Mayberg's premises, with the location of the premises being depicted by a white dot in the centre of the radius:



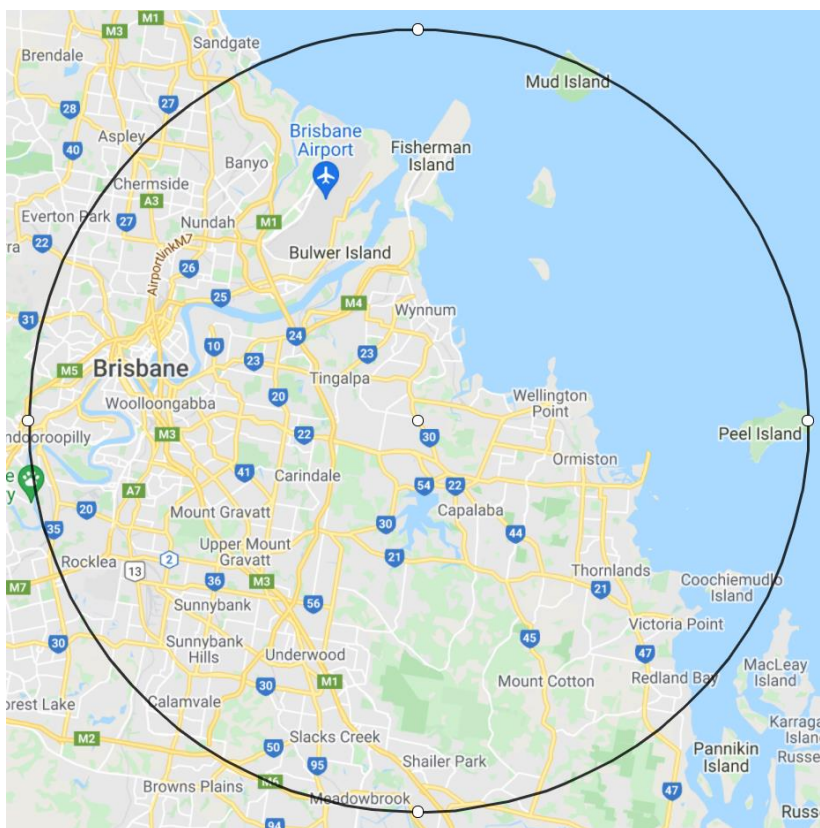
Situation 1: 64 Tingal Rd Wynnum QLD 4178



Situation 2: 66-68 Bloomfield St Cleveland QLD 4163



Situation 3: Shop 24 2-34 Bunker Rd Victoria Point QLD 4165



Situation 4: 681 New Cleveland Rd Gumdale QLD 4154

- 86 The 20 kilometre radius around Situation 3 is entirely within Metro South HHS. However, the Metro South HHS is larger than the Situation 3 20 kilometre radius. The 20 kilometre radii around Situations 1, 2 and 4 are partly within Metro South HHS and partly within

Metro North HHS. However, each of the Metro South HHS and Metro North HSS are larger than the Situations 1, 2 and 4 20 kilometre radii.

- 87 The Queensland government reported the following number of cases of COVID-19 within Metro South HSS and Metro North HSS on the following dates (see paragraphs 41 to 43 as to how these case numbers are identified by reference to these HHSs). The case numbers do not distinguish between cases associated with community transmission, overseas acquisition, interstate acquisition or cases acquired or located in hospital, hotel quarantine or self-isolation:

| Date | Total Cases in QLD on a cumulative basis | Metro North HHS | | | Metro South HHS | | |
|-----------|--|-----------------|--|--|-----------------|--|--|
| | | New cases | Locations | | New cases | Locations | |
| 30-Jan-20 | | 0 | | | 0 | | |
| 22-Feb-20 | 7 | 2 | Prince Charles Hospital (PCH) – within the 20km radius of Situations 1 and 4 | | - | | |
| 25-Feb-20 | | - | | | - | | |
| 3-Mar-20 | 10 | 1 | Royal Brisbane & Women's Hospital (RBWH) – within the 20km radius of Situations 1 and 4 Toowong – this suburb is partially within the 20km radius of Situations 1 and 4 | | 0 | | |
| 4-Mar-20 | 11 | - | | | 1 | Princess Alexandra Hospital (PAH) – within the 20km radius of Situations 1 and 4 | |

| Date | Total Cases in QLD on a cumulative basis | Metro North HHS | | | Metro South HHS | | |
|-----------|--|-----------------|---|--|-----------------|---|--|
| | | New cases | Locations | | New cases | Locations | |
| | | | | | | Logan – this LGA is partially within the 20km of Situations 1, 2, 3 and 4 | |
| 5-Mar-20 | 13 | - | | | - | | |
| 6-Mar-20 | 14 | - | | | 1 | PAH – within the 20km radius of Situations 1 and 4 | |
| 8-Mar-20 | 15 | - | | | - | | |
| 10-Mar-20 | 18 | 2 | RBWH – within the 20km radius of Situations 1 and 4 PCH – within the 20km radius of Situations 1 and 4 | | - | | |
| 11-Mar-20 | 20 | - | University of Queensland – within the 20km radius of Situations 1 and 4 | | - | | |
| 12-Mar-20 | 27 | 3 | PCH – within the 20km radius of Situations 1 and 4 RBWH – within the 20km radius of Situations 1 and 4 | | 2 | PAH – within the 20km radius of Situations 1 and 4 | |
| 13-Mar-20 | 35 | - | | | - | | |
| 14-Mar-20 | 46 | 3 | | | 1 | | |
| 15-Mar-20 | 61 | 3 | | | 3 | | |
| 16-Mar-20 | 68 | 3 | | | 3 | | |
| 17-Mar-20 | 78 | 1 | | | 6 | | |

| Date | Total Cases in QLD on a cumulative basis | Metro North HHS | | | Metro South HHS | | |
|-----------|--|-----------------|-----------|--|-----------------|-----------|--|
| | | New cases | Locations | | New cases | Locations | |
| 18-Mar-20 | 94 | - | | | 3 | | |
| 19-Mar-20 | 144 | 17 | | | 15 | | |
| 20-Mar-20 | 184 | 12 | | | 13 | | |
| 21-Mar-20 | 221 | 16 | | | 6 | | |
| 22-Mar-20 | 259 | 16 | | | 6 | | |
| 23-Mar-20 | 319 | 14 | | | 14 | | |
| 24-Mar-20 | 397 | | | | | | |
| 25-Mar-20 | 443 | - | | | - | | |
| 26-Mar-20 | 493 | - | | | - | | |
| 27-Mar-20 | 555 | - | | | - | | |
| 28-Mar-20 | 625 | - | | | - | | |
| 29-Mar-20 | 656 | - | | | - | | |
| 31-Mar-20 | 743 | - | | | - | | |
| 30-Apr-20 | 1033 | - | | | - | | |
| 31-May-20 | 1058 | - | | | - | | |
| 26-Jun-20 | 1067 | - | | | - | | |
| 7-Jul-20 | 1068 | - | | | - | | |
| 31-Jul-20 | 1083 | | | | | | |
| 31-Aug-20 | 1122 | - | | | - | | |
| 30-Sep-20 | 1157 | | | | - | | |
| 31-Oct-20 | 1171 | - | | | - | | |
| 30-Nov-20 | 1202 | | | | | | |
| 31-Dec-20 | 1253 | - | | | - | | |
| 31-Jan-21 | 1310 | - | | | 2 | | |
| 28-Feb-21 | 1329 | - | | | - | | |
| 31-Mar-21 | 1467 | | | | | | |
| 30-Apr-21 | 1559 | - | | | - | | |

- 88 Queensland Health also publishes media releases regarding contact tracing of COVID-19. These media releases report persons with COVID-19 having travelled to locations within a 20-kilometre radius of the Situations as identified in the table:

| Date | Suburb of Locations |
|----------------|---|
| 23 July 2020 | Sunnybank – within the 20km radius of Situations 1 and 4 Springwood – within the 20km radius of Situations 1, 2, 3 and 4 |
| 26 July 2020 | Chandler – within the 20km radius of Situations 1, 2, 3 and 4 Mount Gravatt – within the 20km radius of Situations 1, 2, 3 and 4 |
| 27 July 2020 | Southbank – within the 20km radius of Situations 1 and 4 only Oxley – within the 20km radius of Situation 4 |
| 28 July 2020 | Woodridge – within the 20km radius of Situations 2, 3 and 4 |
| 21 August 2020 | Fig Tree Pocket – within the 20km radius of Situation 4 |
| 24 August 2020 | Oxley – within the 20km radius of Situation 4 |

| Date | Suburb of Locations |
|--|---|
| 29 August 2020 | Springwood– within the 20km radius of Situations 1, 2, 3 and 4 Underwood – within the 20km radius of Situations 1, 2, 3 and 4 |
| 30 August 2020 | Springwood – within the 20km radius of Situations 1, 2, 3 and 4 |
| 1 September 2020 | Passenger Ferry: Russell Island to Redland Bay, Russell Island-Redland Bay – within the 20km radius of Situations 2 and 3 |
| 4 September 2020 | Mount Gravatt – within the 20km radius of Situations 1, 2, 3 and 4 Garden City – within the 20km radius of Situations 1, 2, 3 and 4 |
| 6 October 2020 | Brisbane City – within the 20km radius of Situations 1 and 4 |
| 16 December 2020 | Brisbane Domestic Airport – within the 20km radius of Situations 1 and 4 Brisbane City – within the 20km radius of Situations 1 and 4 Boondall – within the 20km radius of Situations 1 and 4 Eight Mile Plains – within the 20km radius of Situations 1, 2, 3 and 4 |
| 17 December 2020 | Chermside – within the 20km radius of Situations 1 and 4 |
| 2 January 2021 | Central Station to Altandi station – within the 20km radius of Situation 4 and partially within the 20km of Situation 1 |
| 3 January 2021 | Calamvale North – within the 20km radius of Situation 4 |
| 5 January 2021 | Sunnybank Hills – within the 20km radius of Situation 4 Acacia Ridge – within the 20km radius of Situation 4 |
| 6 January 2021 | Sunnybank Hills – within the 20km radius of Situation 4 |
| 11 March 2021 | West End – within the 20km radius of Situations 1 and 4 Greenslopes – within the 20km radius of Situations 1 and 4 Stones Corner – within the 20km radius of Situations 1 and 4 Coorparoo – within the 20km radius of Situations 1 and 4 |
| 10 March 2021 - 12 March 2021 14 March 2021 – 17 March 2021 | Everton Park – within the 20km radius of Situations 1 and 4 |
| 17 March 2021 | Everton Park – within the 20km radius of Situations 1 and 4 Grange – within the 20km radius of Situations 1 and 4 |
| 18 March 2021 | Everton Park – within the 20km radius of Situations 1 and 4 |
| 19 March 2021 | Windsor – within the 20km radius of Situations 1 and 4 |

| Date | Suburb of Locations |
|---------------|---|
| 20 March 2021 | Carindale – within the 20km radius of Situations 1, 2, 3 and 4 Newmarket – within the 20km radius of Situations 1 and 4 Everton Park – within the 20km radius of Situations 1 and 4 Teneriffe – within the 20km radius of Situations 1 and 4 East Brisbane – within the 20km radius of Situations 1 and 4 |
| 21 March 2021 | Alderley – within the 20km radius of Situations 1 and 4 Newstead – within the 20km radius of Situations 1 and 4 |
| 22 March 2021 | Stafford – within the 20km radius of Situations 1 and 4 |
| 25 March 2021 | Stafford – within the 20km radius of Situations 1 and 4 |
| 29 April 2021 | Brisbane International Airport – within the 20km radius of Situations 1 and 4 |

89 The Authority Response-Mayberg is set out in the Mayberg Outline Document.

Gym Franchises Australia and Douglas Reason

- 90 The terms and conditions set out in the Product Disclosure Statement for the Fitness Centres Business Insurance Policy issued to GFA comprised Guild's standard terms and conditions were not the subject of negotiation between Guild and Gym Franchises Australia Pty Ltd and Douglas Reason.
- 91 The policy schedule for Gym Franchises Australia Pty Ltd and Douglas Reason (**GFA**) states that the business is located at Shop 3 1 Brygon Creek Drive, Upper Coomera QLD 4209 (**Upper Coomera Premises**). On 14 April 2020, GFA entered into a lease for premises at 34-38 Signato Road, Helensvale 4212 (**Helensvale Premises**) and since 17 April 2020 has been operating from the Helensvale Premises. The Upper Coomera Premises and the Helensvale Premises are referred to collectively as the **GFA Premises**.
- 92 **{GFA disputes the relevance of this fact}** GFA was not, at any relevant time, informed by a competent government or statutory authority that there had been an occurrence of COVID-19 at the GFA Premises or the discovery of SARS-CoV-2 at the GFA Premises.
- 93 **{GFA disputes the relevance of this fact}** GFA was not, at any relevant time, aware of an occurrence of COVID-19 at the GFA Premises or the discovery of SARS-CoV-2 at the GFA Premises.

94 **{Not agreed: Guild disputes the inclusion of these facts}** The applicable HHS region for GFA is the Gold Coast, shown in **Annexure M**.

95 There were the following cases in the Gold Coast HHS region on the following dates:

| Date | Total cases in Queensland | New cases in Gold Coast HHS new | Total cases in Gold Coast HHS total | Location |
|-----------|---------------------------|---------------------------------|-------------------------------------|---------------------------------------|
| 30-Jan-20 | 2 | 2 | 2 | Gold Coast University Hospital (GCUH) |
| 4-Feb-20 | 3 | 1 | 3 | GCUH |
| 5-Feb-20 | 4 | 1 | 4 | GCUH |
| 6-Feb-20 | 5 | 1 | 5 | GCUH |
| 29-Feb-20 | 9 | 1 | 6 | GCUH |
| 11-Mar-20 | 20 | 2 | 8 | GCUH |
| 12-Mar-20 | 27 | 2 | 10 | GCUH |
| 14-Mar-20 | 46 | 2 | 12 | - |
| 15-Mar-20 | 61 | 6 | 18 | - |
| 17-Mar-20 | 78 | 1 | 19 | - |
| 18-Mar-20 | 94 | 7 | 26 | - |
| 19-Mar-20 | 144 | 12 | 38 | - |
| 23-Mar-20 | 319 | 8 | 46 | - |
| 24-Mar-20 | 397 | - | 79 | - |
| 25-Mar-20 | 443 | - | 87 | - |
| 26-Mar-20 | 493 | - | 91 | - |
| 27-Mar-20 | 555 | - | 106 | - |
| 28-Mar-20 | 625 | - | 114 | - |
| 29-Mar-20 | 656 | - | 121 | - |
| 31-Mar-20 | 743 | - | 147 | - |
| 30-Apr-20 | 1033 | - | 192 | - |
| 31-May-20 | 1058 | - | 193 | - |
| 26-Jun-20 | 1067 | - | 196 | - |
| 7-Jul-20 | 1068 | - | 196 | - |
| 31-Jul-20 | 1068 | - | - | - |
| 31-Aug-20 | 1122 | 1 | - | GCUH |
| 30-Sep-20 | 1157 | - | - | - |
| 31-Oct-20 | 1171 | - | - | - |
| 30-Nov-20 | 1202 | - | - | - |
| 31-Dec-20 | 1253 | 1 | - | GCUH |
| 31-Jan-21 | 1310 | - | - | - |
| 28-Feb-21 | 1329 | - | - | - |
| 31-Mar-21 | 1467 | - | - | - |
| 30-Apr-21 | 1559 | - | - | - |

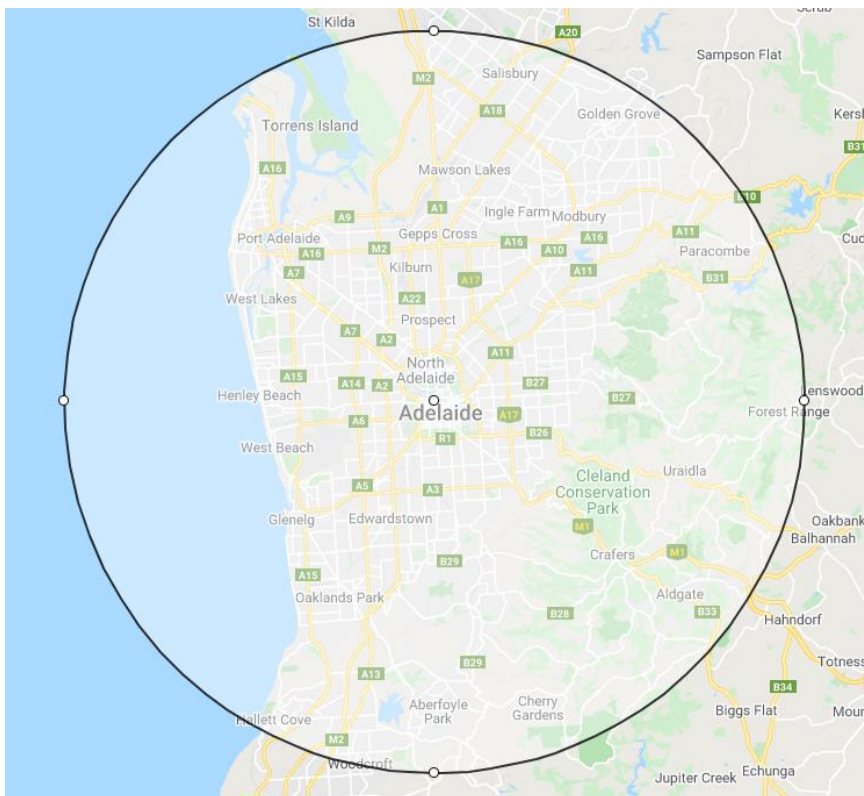
Visintin

The Policy

- 96 General Insurance Agencies Pty Ltd t/as GIA Insurance Brokers (**GIA**) is an Authorised Representative for Community Broker Network Pty Ltd and was, at all material times, a general insurance broker.
- 97 GIA, acting on behalf of Visintin, organised for the placing of the Visintin Policy no. 152RN00078COM (policy period 30 July 2019 to 4:00pm 30 July 2020) with Allianz.
- 98 The terms and conditions set out in the Product Disclosure Statement for the Visintin Policy and the "*Prevention of Access 48 hours minimum interruption*" endorsement in the policy schedule comprised Allianz's standard Steadfast terms and conditions and were not the subject of negotiation between Allianz and Visintin.

Location of the "Situation"

- 99 The policy schedule for Visintin notes "Situation 1" is 3 Leigh St, Adelaide SA 5000. The Visintin Policy refers to "the outbreak ... occurring within a 20 kilometre radius of the Premises".
- 100 A 20 kilometre radius around Situation 1 is shown in the following diagram, with the location of the premises being depicted by a white dot in the centre of the radius:



- 101 **{Allianz disputes the relevance of these facts}** As at 13 May 2021, South Australia had 755 total cases. The following table shows total cases to date within local government areas wholly and partly within above radius:

| Local government area | Total cases (LGAs wholly within radius) | Total cases (LGAs partly within radius) |
|---|---|---|
| Adelaide | 283 | |
| Burnside | 14 | |
| Campbelltown | 16 | |
| Charles Sturt | 36 | |
| Holdfast Bay | 12 | |
| Mitcham | 37 | |
| Norwood Payneham St Peters | 9 | |
| Prospect | 4 | |
| Unley | 9 | |
| Walkerville | 8 | |
| West Torrens | 17 | |
| Adelaide Hills | | 14 |
| Marion | | 35 |
| Mount Barker | | 8 |
| Onkaparinga | | 37 |
| Port Adelaide Enfield | | 28 |
| Salisbury | | 32 |
| Tea Tree Gully | | 22 |
| Totals | 445 | 176 |
| Total (partly & wholly within) | 621 | |

- 102 **{Allianz disputes the relevance of the fact in the first sentence}** The above 621 cases represent approximately 82% of the 755 total cases in South Australia. The South Australian government reported the following cases of COVID-19 on the following dates. The case numbers do not distinguish between cases associated with community transmission, overseas acquisition, interstate acquisition or cases acquired or located in hospital, hotel quarantine or self-isolation:

| Date | Total cases in South Australia on a cumulative basis | New cases in South Australia |
|-----------|--|------------------------------|
| 4-Feb-20 | 2 | 2 |
| 20-Feb-20 | | |
| 4-Mar-20 | 5 | 2 |
| 5-Mar-20 | 7 | 2 |
| 11-Mar-20 | 9 | 2 |
| 12-Mar-20 | 12 | 3 |
| 13-Mar-20 | 16 | 4 |
| 14-Mar-20 | 19 | 3 |
| 15-Mar-20 | 20 | 1 |
| 16-Mar-20 | 29 | 9 |
| 17-Mar-20 | 32 | 2 |
| 18-Mar-20 | 37 | 5 |
| 19-Mar-20 | 42 | 5 |
| 20-Mar-20 | 50 | 8 |
| 21-Mar-20 | 67 | 17 |
| 22-Mar-20 | 100 | 33 |

| Date | Total cases in South Australia on a cumulative basis | New cases in South Australia |
|-------------|---|-------------------------------------|
| 24-Mar-20 | 170 | 36 |
| 25-Mar-20 | 197 | 27 |
| 28-Mar-20 | 287 | 30 |
| 31-Mar-20 | 337 | 32 |
| 30-Apr-20 | 438 | |
| 31-May-20 | 440 | |
| 29-Jun-20 | 443 | 3 |
| 31-Jul-20 | 450 | 1 |
| 31-Aug-20 | 463 | 0 |
| 30-Sep-20 | 468 | |
| 31-Oct-20 | 501 | 4 |
| 30-Nov-20 | 559 | 0 |
| 31-Dec-20 | 576 | 2 |
| 31-Jan-21 | 597 | 1 |
| 28-Feb-21 | 613 | 0 |
| 31-Mar-21 | 655 | 0 |
| 30-Apr-21 | 724 | 2 |

103 The Authority Response-Visintin is set out in the Outline Document for Visintin.

ANNEXURE A – Measures promulgated at the Commonwealth level

ANNEXURE A – Measures promulgated at the Commonwealth level

*

| # | Relevant Date(s) | Measures |
|----|-------------------------------------|--|
| 1 | 1 February 2020 to 14 February 2020 | Travel restrictions on foreign nationals from mainland China entering Australia. |
| 2 | 14 February 2020 to 21 February | Extended travel restrictions on foreign nationals from mainland China entering Australia. |
| 3 | 21 February 2020 to present | Further extension on travel restrictions on foreign nationals from mainland China entering Australia. |
| 4 | 1 March 2020 to present | Travel restrictions on foreign nationals from Iran entering Australia. |
| 5 | 5 March 2020 to present | Travel restrictions on foreign nationals from the Republic of Korea entering Australia. |
| 6 | 11 March 2020 to present | Travel restrictions on foreign nationals from Italy entering Australia. |
| 7 | 13 March 2020 | The Australian Health Protection Principal Committee (AHPPC) provide a recommendation for public gatherings, testing and social distancing. |
| 8 | 16 March 2020 | Advice against non-essential, organised public gatherings of more than 500 people. |
| 9 | 16 March 2020 | Citizens, residents and visitors required to self-isolate for 14 days upon arrival in Australia. |
| 10 | 16 March 2020 to present | Ban on cruise ships from foreign ports from arriving at Australian ports. Biosecurity (Human Biosecurity Emergency) (Human Coronavirus with Pandemic Potential) (Emergency Requirements) Determination 2020 Biosecurity (Human Biosecurity Emergency) (Human Coronavirus with Pandemic Potential) (Emergency Requirements) Amendment Determination (No. 1) 2020 Biosecurity (Human Biosecurity Emergency) (Human Coronavirus with Pandemic Potential) (Emergency Requirements) Amendment Determination (No. 2) 2020 Biosecurity (Human Biosecurity Emergency) (Human Coronavirus with Pandemic Potential) (Emergency Requirements for Cruise Ships) Determination 2020 Biosecurity (Human Biosecurity Emergency) (Human Coronavirus with Pandemic Potential) (Emergency Requirements for Cruise Ships) Amendment (No. 1) Determination 2020 |

| # | Relevant Date(s) | Measures |
|----|------------------|--|
| 11 | 18 March 2020 | <u>National Cabinet agrees to ban non-essential gatherings of greater than 100 people.</u> |
| 12 | 18 March 2020 | <u>National Cabinet agree that all Australians should only consider travelling when it is essential.</u> |
| 13 | 20 March 2020 | <u>Closure of Australian borders to all noncitizens and non-residents.</u> |
| 14 | 20 March 2020 | <u>National Cabinet agree on further restrictions to indoor and outdoor gatherings. Australians are again advised to consider the need for unnecessary travel.</u> |
| 15 | 23 March 2020 | <u>National Cabinet agrees on further restrictions on social gatherings.</u> |
| 16 | 24 March 2020 | <u>AHPPC advise the National Cabinet on options for the progressive scale up of social distancing measures. The advice extends to indoor and outdoor gatherings, classifications for populous areas and guidance for more intense social distancing.</u> |
| 17 | 25 March 2020 | <u>National Cabinet confirms and clarifies the AHPPC advice regarding the requirements on previously announced measures and provide a list of additional prohibited activities and venues.</u> |
| 18 | 29 March 2020 | <u>National Cabinet issues strong guidance to all Australians to stay home except for acquiring essential goods or participating in essential activities.</u> |
| 19 | 7 April 2020 | <u>National Cabinet reminds Australians that social distancing must continue at Easter and agreed that Australians should not undertake unnecessary holiday travel.</u> |
| 20 | 9 April 2020 | <u>National Cabinet reminds Australians to stay home for the Easter break.</u> |
| 21 | 8 May 2020 | <u>National Cabinet launch of COVIDSafe framework.</u> |
| 22 | 12 June 2020 | <u>National Cabinet agree on changes to restrictions on indoor and outdoor gatherings.</u> |

ANNEXURE B – Measures promulgated at the NSW level

ANNEXURE B – Measures promulgated at the New South Wales level

| # | Relevant date(s) | Measures |
|----|--|---|
| 1 | 16 March 2020 - 18 March 2020 at 5.00pm | Minister for Health makes order in relation to capacity at Public Events under the <i>Public Health Act 2010</i> (NSW) - Public Health (COVID-19 Public Events) Order 2020 |
| 2 | 18 March 2020 at 5.00pm - 21 March 2020 | Minister for Health makes order in relation to Mass Gatherings under the <i>Public Health Act 2010</i> (NSW) - Public Health (COVID-19 Mass Gatherings) Order 2020 |
| 3 | 18 March 2020 | NSW Minister for Health releases a COVID-19 update |
| 4 | 21 March 2020 - 23 March 2020 at 12.00pm | Minister for Health makes order in relation to Mass Gatherings under the <i>Public Health Act 2010</i> (NSW) - Public Health (COVID-19 Gatherings) Order 2020 |
| 5 | 23 March 2020 at 12.00pm - 26 March 2020 | Minister for Health makes order in relation to Places of Social Gathering under the <i>Public Health Act 2010</i> (NSW) - Public Health (COVID-19 Places of Social Gathering) Order 2020 |
| 6 | 23 March 2020 | The Australian Dental Association (ADA) release a media statement and "ADA Dental Service Restrictions in COVID-19" framework |
| 7 | 25 March 2020 | The ADA releases the "Managing COVID-19 Guidelines" |
| 8 | 26 March 2020 – 31 March 2020 | Minister for Health directs additional businesses must not open under <i>Public Health Act 2010</i> (NSW) - Public Health (COVID-19 Gatherings) Order (No 2) 2020 and Public Health (COVID-19 Gatherings) Order (No 3) 2020 |
| 9 | 26 March 2020 | ADA recommends dental practices nationally apply level 2 restrictions in the absence of a government mandate |
| 10 | 28 March 2020 | The Australian Health Protection Principal Committee (AHPPC) publishes a statement |
| 11 | 30 March 2020 | NSW Premier announces "if you can stay home you should" |
| 12 | 31 March 2020 - 15 May 2020 | Minister for Health makes orders in relation to Restrictions on Gathering and Movement under <i>Public Health Act 2010</i> (NSW) - Public Health (COVID-19 Restrictions on Gathering and Movement) Order 2020 Amended by: |

| # | Relevant date(s) | Measures |
|----|---------------------------|---|
| | | <ul style="list-style-type: none"> • Public Health (COVID-19 Restrictions on Gathering and Movement) Amendment Order 2020 on 4 April 2020 • Public Health (COVID-19 Restrictions on Gathering and Movement) Amendment Order (No 2) 2020 on 1 May 2020 • Public Health (COVID-19 Restrictions on Gathering and Movement) Amendment (Real Estate) Order 2020 on 9 May 2020 |
| 13 | 2 April 2020 | Update from the Dental Board of Australia and AHPRA |
| 14 | 7 April 2020 | The ADA releases an updated media statement |
| 15 | 7 April 2020 | NSW Police Commissioner and NSW Premier announce "stay home and stay safe" |
| 16 | 21 April 2020 | The ADA releases a media statement |
| 17 | 28 April 2020 | NSW Premier requests those with symptoms to get tested |
| 18 | 1 May 2020 | Health Minister makes announcement regarding beauty salons |
| 19 | 8 May 2020 | National Cabinet approve a move to Level 1 restrictions for dentistry |
| 20 | 8 May 2020 | The ADA releases a media statement |
| 21 | 15 May 2020 – 1 June 2020 | Minister for Health makes order in relation to Restrictions on Gathering and Movement under the <i>Public Health Act 2010</i> (NSW) – Public Health (COVID-19 Restrictions on Gathering and Movement) Order (No 2) 2020 |
| 22 | 24 May 2020 | NSW Health releases COVID-19 update regarding beauty and nail salon operators |
| 23 | 1 June 2020 - 1 July 2020 | Minister for Health makes order in relation to Restrictions on Gathering and Movement under the <i>Public Health Act 2010</i> (NSW) - Public Health (COVID-19 Restrictions on Gathering and Movement) Order (No 3) 2020 Amended by: <ul style="list-style-type: none"> • Public Health (COVID-19 Restrictions on Gathering and Movement) (No 3) Amendment Order 2020 on 13 June 2020 |

| # | Relevant date(s) | Measures |
|----|---------------------------------|---|
| 24 | 1 July 2020 - 28 September 2020 | <p>Minister for Health makes order in relation to Restrictions on Gathering and Movement under the <i>Public Health Act 2010</i> (NSW) - Public Health (COVID-19 Restrictions on Gathering and Movement) Order (No 4) 2020</p> <p>Amended by:</p> <ul style="list-style-type: none"> • Public Health (COVID-19 Restrictions on Gathering and Movement) Order (No 4) Amendment Order 2020 on 17 July and 18 July 2020 • Public Health (COVID-19 Restrictions on Gathering and Movement) Order (No 4) Amendment (No 2) Order 2020 on 24 and 25 July 2020 • Public Health (COVID-19 Restrictions on Gathering and Movement) Order (No 4) Amendment (No 3) Order 2020 on 1 August 2020 and 6 August 2020 • Public Health (COVID-19 Restrictions on Gathering and Movement) Order (No 4) Amendment (No 4) Order 2020 on 26 August 2020 • Public Health (COVID-19 Restrictions on Gathering and Movement) Order (No 4) Amendment (No 5) Order 2020 on 14 September 2020 • Public Health (COVID-19 Restrictions on Gathering and Movement) Order (No 4) Amendment (No 6) Order 2020 on 24 September 2020 |
| 25 | 8 July 2020 - 2 October 2020 | <p>Minister for Health makes an order in relation to travellers from Victoria to NSW under <i>Public Health Act 2010</i> (NSW) - Public Health (COVID-19 Border Control) Order 2020</p> <p>Amended by:</p> <ul style="list-style-type: none"> • Public Health (COVID-19 Border Control) Amendment Order 2020 on 22 July 2020 • Public Health (COVID-19 Border Control) Amendment (Border Community) Order 2020 on 22 July at 9.26pm • Public Health (COVID-19 Border Control) Amendment (Vulnerable Persons) Order 2020 on 24 July 2020 at 2.30 pm • Public Health (COVID-19 Border Control) Amendment (Medical and Hospital Services) Order 2020 on 25 July 2020 at 10.52 am • Public Health (COVID-19 Border Control) Amendment Order (No 2) 2020 on 7 August 2020 and 10 August at 4pm |

| # | Relevant date(s) | Measures |
|----|-------------------------------------|---|
| | | <ul style="list-style-type: none"> • Public Health (COVID-19 Border Control) Amendment (Transiting ACT Residents) Order 2020 on 13 August 2020 • Public Health (COVID-19 Border Control) Amendment Order (No 3) 2020 on 18 August 2020 at midday • Public Health (COVID-19 Border Control) Amendment Order (No 4) 2020 on 4 September 2020 • Public Health (COVID-19 Border Control) Amendment Order (No 5) 2020 on 12 September 2020 • Public Health (COVID-19 Border Control) Amendment Order (No 6) 2020 on 17 September 2020 • Public Health (COVID-19 Border Control) Amendment Order (No 7) 2020 on 25 September 2020 • Public Health (COVID-19 Border Control) Amendment Order (No 8) 2020 on 28 September 2020 • |
| 26 | 2 October 2020 - 23 November 2020 | Minister for Health makes an order in relation to travellers from Victoria to NSW under <i>Public Health Act 2010</i> (NSW) - Public Health (COVID-19 Border Control) Order (No 2) 2020 as amended by Public Health (COVID-19 Border Control) (No 2) Amendment Order on 16 October 2020 |
| 27 | 17 July 2020 | NSW Premier and Minister for Health release a media statement |
| 28 | 28 September 2020 – 1 December 2020 | <p>Minister for Health makes order in relation to Restrictions on Gatherings and Movement under <i>Public Health Act 2010</i> (NSW) - Public Health (COVID-19 Restrictions on Gathering and Movement) Order (No 5) 2020</p> <p>Amended by:</p> <ul style="list-style-type: none"> • Public Health (COVID-19 Restrictions on Gathering and Movement) Order (No 5) Amendment Order 2020 on 16 October 2020 • Public Health (COVID-19 Restrictions on Gathering and Movement) Order (No 5) Amendment (No 2) Order 2020 on 23 October 2020 • Public Health (COVID-19 Restrictions on Gathering and Movement) Order (No 5) Amendment (No 3) Order 2020 on 23 November 2020 and 1 December 2020 |
| 29 | 1 December 2020 – 7 December 2020 | Minister for Health makes order in relation to Restrictions on Gatherings and Movement under <i>Public Health Act 2010</i> (NSW) - Public Health (COVID-19 Restrictions on Gathering and Movement) Order (No 6) 2020 |

| # | Relevant date(s) | Measures |
|----|------------------------------------|--|
| 30 | 7 December 2020 – 26 February 2021 | <p>Minister for Health makes order in relation to Restrictions on Gathering and Movement under the <i>Public Health Act 2010</i> (NSW) - Public Health (COVID-19 Restrictions on Gathering and Movement) Order (No 7) 2020</p> <p>Amended by:</p> <ul style="list-style-type: none"> • Public Health (COVID-19 Restrictions on Gathering and Movement) Order (No 7) Amendment Order 2020 on 17 December 2020 • Public Health (COVID-19 Restrictions on Gathering and Movement) Order (No 7) Amendment (No 2) Order 2020 on 21 December 2020 • Public Health (COVID-19 Restrictions on Gathering and Movement) Order (No 7) Amendment (No 3) Order 2020 on 23 December 2020 • Public Health (COVID-19 Restrictions on Gathering and Movement) Order (No 7) Amendment (No 4) Order 2020 on 29 December 2020 and 1 January 2021 • Public Health (COVID-19 Restrictions on Gathering and Movement) Order (No 7) Amendment (No 5) Order 2020 on 29 December 2020 and 1 January 2021 • Public Health (COVID-19 Restrictions on Gathering and Movement) Order (No 7) Amendment (No 6) Order 2020 on 31 December 2020, 1 January 2021 and 3 January 2021 • Public Health (COVID-19 Restrictions on Gathering and Movement) Order (No 7) Amendment Order 2021 on 3 January 2021 • Public Health (COVID-19 Restrictions on Gathering and Movement) Order (No 7) Amendment (No 2) Order 2021 on 7 January 2021 • Public Health (COVID-19 Restrictions on Gathering and Movement) Order (No 7) Amendment (No 3) Order 2021 on 8 January 2021 • Public Health (COVID-19 Restrictions on Gathering and Movement) Order (No 7) Amendment (No 4) Order 2021 at 5:27pm on 8 January 2021 • Public Health (COVID-19 Restrictions on Gathering and Movement) Order (No 7) Amendment (No 5) Order 2021 on 29 January 2021 • Public Health (COVID-19 Restrictions on Gathering and Movement) Order (No 7) Amendment (No 6) Order 2021 on 12 February 2021 |

| # | Relevant date(s) | Measures |
|----|--|--|
| 31 | From 19 December 2020 (commenced 5:02pm) | Minister for Health makes order in relation to the Northern Beaches under the <i>Public Health Act 2010</i> (NSW) - Public Health (COVID-19 Northern Beaches) Order 2020 |
| 32 | 19 December 2020 | NSW Premier urges all residents of Greater Sydney to stay home |
| 33 | 10 January 2021 | Minister for Health repeals Northern Beaches order |
| 34 | 27 January 2021 | NSW Premier releases media statement to stay vigilant |

ANNEXURE C – Measures promulgated at the Victorian level

ANNEXURE C – Measures promulgated at the Victorian level

*

| # | Relevant date/s | Measures |
|----|------------------------------------|---|
| 1 | From 16 March 2020 | <i>Declaration of a State of Emergency under the Public Health and Wellbeing Act 2008 (Vic)</i> |
| 2 | From 18 March 2020 | <i>Direction from the Deputy Chief Health Officer (Communicable Disease) in relation to Airport Arrivals under the Public Health and Wellbeing Act 2008 (Vic)</i> |
| 3 | 23 March 2020 to 25 March 2020 | <i>Non-essential Business Closure Direction</i> |
| 4 | 25 March 2020 to 26 March 2020 | <i>Non-Essential Activity Directions</i> |
| 5 | 26 March 2020 to 30 March 2020 | <i>Non-Essential Activity Directions (No 2)</i> |
| 6 | From 29 March 2020 | <i>Direction and Detention Notice</i> |
| 7 | 29 March 2020 to 28 September 2020 | Date from which <i>COVID-19 Omnibus (Emergency Measures) (Commercial Leases and Licences) Regulations 2020 (Vic)</i> are taken to have come into effect. |
| 8 | 30 March 2020 to 7 April 2020 | <i>Restricted Activity Directions</i> |
| 9 | 30 March 2020 to 2 April 2020 | <i>Stay at Home Directions</i> |
| 10 | 2 April 2020 to 7 April 2020 | <i>Stay at Home Directions (No 2)</i> |
| 11 | 7 April 2020 | <i>National Cabinet Mandatory Code of Conduct - SME Commercial Leasing Principles During COVID-19 released.</i> |
| 12 | 7 April 2020 to 13 April 2020 | <i>Restricted Activity Directions (No. 2)</i> |
| 13 | 7 April 2020 to 13 April 2020 | <i>Stay at Home Directions (No 3)</i> |
| 14 | 13 April 2020 to 17 April 2020 | <i>Restricted Activity Directions (No.3)</i> |
| 15 | 13 April 2020 to 11 May 2020 | <i>Stay at Home Directions (No 4)</i> |

| # | Relevant date/s | Measures |
|----|--------------------------------|--|
| 16 | 17 April 2020 to 24 April 2020 | <i>Restricted Activity Directions (No. 4)</i> |
| 17 | 24 April 2021 | COVID-19 Omnibus (Emergency Measures) Act 2020 (Vic) enters into force with some parts retrospectively operative from 29 March 2020. |
| 18 | 24 April 2020 to 11 May 2020 | <i>Restricted Activity Directions (No. 5)</i> |
| 19 | 1 May 2020 | <i>COVID-19 Omnibus (Emergency Measures) (Commercial Leases and Licences) Regulations 2020</i> enters into force (operating retrospectively from 29 March 2020). |
| 20 | 11 May 2020 to 12 May 2020 | <i>Restricted Activity Directions (No. 6)</i> |
| 21 | 12 May 2020 to 25 May 2020 | <i>Restricted Activity Directions (No. 7)</i> |
| 22 | 11 May 2020 to 12 May 2020 | <i>Stay at Home Directions (No 5)</i> |
| 23 | 12 May 2020 to 25 May 2020 | <i>Stay at Home Directions (No 6)</i> |
| 24 | 25 May 2020 to 31 May 2020 | <i>Restricted Activity Directions (No. 8)</i> |
| 25 | 25 May 2020 to 31 May 2020 | <i>Stay at Home Directions (No 7)</i> |
| 26 | 31 May 2020 to 21 June 2020 | <i>Restricted Activity Directions (No. 9)</i> |
| 27 | 31 May 2020 to 21 June 2020 | <i>Stay Safe Directions</i> |
| 28 | 21 June 2020 to 1 July 2020 | <i>Restricted Activity Directions (No. 10)</i> |
| 29 | 21 June 2020 to 12 July 2020 | <i>Stay Safe Directions (No. 2)</i> |
| 30 | 1 July 2020 to 4 July 2020 | <i>Area Directions</i> |
| 31 | 1 July 2020 to 8 July 2020 | <i>Restricted Activity Directions (No. 11)</i> |

| # | Relevant date/s | Measures |
|----|-------------------------------|---|
| 32 | 1 July 2020 to 8 July 2020 | <i>Stay at Home Directions (Restricted Postcodes)</i> |
| 33 | 4 July 2020 to 8 July 2020 | <i>Area Directions (No 2)</i> |
| 34 | 8 July 2020 to 19 July 2020 | <i>Restricted Activity Directions (No 12)</i> |
| 35 | 8 July 2020 to 19 July 2020 | <i>Restricted Activity Directions (Restricted Areas)</i> |
| 36 | 8 July 2020 to 10 July 2020 | <i>Stay at Home Directions (Restricted Areas)</i> |
| 37 | 8 July 2020 to 19 July 2020 | <i>Area Directions (no. 3)</i> |
| 38 | 10 July 2020 to 19 July 2020 | <i>Stay at Home Directions (Restricted Areas) (No 2)</i> |
| 39 | 19 July 2020 to 22 July 2020 | <i>Restricted Activity Directions (No 13)</i> |
| 40 | 19 July 2020 to 22 July 2020 | <i>Restricted Activity Directions (Restricted Areas) (No 2)</i> |
| 41 | 19 July 2020 to 22 July 2020 | <i>Stay at Home Directions (Restricted Areas) (No 3)</i> |
| 42 | 19 July 2020 to 30 July 2020 | <i>Area Directions (No. 4)</i> |
| 43 | 22 July 2020 to 30 July 2020 | <i>Restricted Activity Directions (No 14)</i> |
| 44 | 22 July 2020 to 2 August 2020 | <i>Restricted Activity Directions (Restricted Areas) (No 3)</i> |
| 45 | 22 July 2020 to 30 July 2020 | <i>Stay at Home Directions (Restricted Areas) (No 4)</i> |
| 46 | 30 July 2020 to 2 August 2020 | <i>Restricted Activity Directions (No 15)</i> |
| 47 | 30 July 2020 to 2 August 2020 | <i>Stay at Home Directions (Restricted Areas) (No 5)</i> |
| 48 | 30 July 2020 to 5 August 2020 | <i>Area Directions (No. 5)</i> |

| # | Relevant date/s | Measures |
|----|--|---|
| 49 | 2 August 2020 to 5 August 2020 | <i>Restricted Activity Directions (No 16)</i> |
| 50 | 2 August 2020 | <i>Restricted Activity Directions (Restricted Areas) (No 4)</i> |
| 51 | 2 August 2020 to 5 August 2020 | <i>Restricted Activity Directions (Restricted Areas) (No 5)</i> |
| 52 | 2 August 2020 | <i>Stay at Home Directions (Restricted Areas) (No 6)</i> |
| 53 | 2 August 2020 to 5 August 2020 | <i>Stay at Home Directions (Restricted Areas) (No 7)</i> |
| 54 | 5 August 2020 to 6 August 2020 | <i>Stay at Home Directions (Restricted Areas) (No. 8)</i> |
| 55 | 5 August 2020 to 13 August 2020 | <i>Restricted Activity Directions (Restricted Areas) (No 6)</i> |
| 56 | 5 August 2020 to 16 August 2020 | <i>Area Directions (No. 6)</i> |
| 57 | 6 August 2020 to 8 August 2020 | <i>Stay at Home Directions (Restricted Areas) (No 9)</i> |
| 58 | 8 August 2020 to 13 August 2020 | <i>Stay at Home Directions (Restricted Areas) (No. 10)</i> |
| 59 | 13 August 2020 to 16 August 2020 | <i>Restricted Activity Directions (Restricted Areas) (No 7)</i> |
| 60 | 13 August 2020 to 16 August 2020 | <i>Stay at Home Directions (Restricted Areas) (No 11)</i> |
| 61 | 16 August 2020 to 13 September 2020 | <i>Restricted Activity Directions (Restricted Areas) (No 8)</i> |
| 62 | 16 August 2020 to 20 August 2020 | <i>Stay at Home Directions (Restricted Areas) (No 12)</i> |
| 63 | 16 August 2020 to 13 September 2020 | <i>Area Directions (No. 7)</i> |
| 64 | 20 August 2020 to 27 August 2020 | <i>Stay at Home Directions (Restricted Areas) (No 13)</i> |
| 65 | 27 August 2020 to 13 September 2020 | <i>Stay at Home Directions (Restricted Areas) (No 14)</i> |

| # | Relevant date/s | Measures |
|----|--|--|
| 66 | 13 September 2020 to 27 September 2020 | <i>Restricted Activity Directions (Restricted Areas) (No 9)</i> |
| 67 | 13 September 2020 to 27 September 2020 | <i>Stay at Home Directions (Restricted Areas) (No 15)</i> |
| 68 | 13 September 2020 to 11 October 2020 | <i>Area Directions (No. 8)</i> |
| 69 | 27 September 2020 to 4 October 2020 | <i>Restricted Activity Directions (Restricted Areas) (No 10)</i> |
| 70 | 27 September 2020 to 4 October 2020 | <i>Stay at Home Directions (Restricted Areas) (No 16)</i> |
| 71 | 29 September 2020 to 21 December 2020 | <i>COVID-19 Omnibus (Emergency Measures) (Commercial Leases and Licences) Miscellaneous Amendments Regulations 2020 (Vic) (S.R. No. 107/2020)</i> enters into force. |
| 72 | 4 October 2020 to 11 October 2020 | <i>Restricted Activity Directions (Restricted Areas) (No 11)</i> |
| 73 | 4 October 2020 to 11 October 2020 | <i>Stay at Home Directions (Restricted Areas) (No 17)</i> |
| 74 | 11 October 2020 to 18 October 2020 | <i>Restricted Activity Directions (Restricted Areas) (No 12)</i> |
| 75 | 11 October 2020 to 18 October 2020 | <i>Stay at Home Directions (Restricted Areas) (No 18)</i> |
| 76 | 11 October 2020 to 8 November 2020 | <i>Area Directions (No. 9)</i> |
| 77 | 18 October 2020 to 26 October 2020 | <i>Restricted Activity Directions (Restricted Areas) (No 13)</i> |
| 78 | 18 October 2020 to 27 October 2020 | <i>Stay at Home Directions (Restricted Areas) (No. 19)</i> |
| 79 | 26 October 2020 to 27 October 2020 | <i>Restricted Activity Directions (Restricted Areas) (No 14)</i> |
| 80 | 27 October 2020 to 8 November 2020 | <i>Restricted Activity Directions (Melbourne)</i> |

| # | Relevant date/s | Measures |
|----|--------------------------------------|---|
| 81 | 27 October 2020 to 28 October 2020 | <i>Stay Safe Directions (Melbourne)</i> |
| 82 | 28 October 2020 to 8 November 2020 | <i>Stay Safe Directions (Melbourne) (No. 2)</i> |
| 83 | 8 November 2020 to 22 November 2020 | <i>Stay Safe Directions (Victoria)</i> |
| 84 | 22 November 2020 to 29 November 2020 | <i>Stay Safe Directions (Victoria) (No. 2)</i> |
| 85 | 29 November 2020 to 6 December 2020 | <i>Stay Safe Directions (Victoria) (No. 3)</i> |
| 86 | 6 December 2020 to 16 December 2020 | <i>Stay Safe Directions (Victoria) (No. 4)</i> |
| 87 | 16 December 2020 to 18 December 2020 | <i>Stay Safe Directions (Victoria) (No. 5)</i> |
| 88 | 18 December 2020 to 31 December 2020 | <i>Stay Safe Directions (Victoria) (No. 6)</i> |
| 89 | 22 December 2020 to 1 March 2021 | <i>COVID-19 Omnibus (Emergency Measures) (Commercial Leases and Licences) Amendment Regulations 2020 (Vic) (S.R. No. 147/2020)</i> enters into force. |
| 90 | 31 December 2020 to 3 January 2021 | <i>Stay Safe Directions (Victoria) (No. 7)</i> |
| 91 | 3 January 2021 to 11 January 2021 | <i>Stay Safe Directions (Victoria) (No. 8)</i> |
| 92 | 11 January 2021 to 17 January 2021 | <i>Stay Safe Directions (Victoria) (No. 9)</i> |
| 93 | 17 January 2020 to 22 January 2021 | <i>Stay Safe Directions (Victoria) (No. 10)</i> |
| 94 | 22 January 2021 to 29 January 2021 | <i>Stay Safe Directions (Victoria) (No. 11)</i> |
| 95 | 29 January 2021 to 3 February 2020 | <i>Stay Safe Directions (Victoria) (No. 12)</i> |
| 96 | 3 February 2020 to 12 February 2021 | <i>Stay Safe Directions (Victoria) (No. 13)</i> |
| 97 | 12 February 2021 to 17 February 2021 | <i>Stay Safe Directions (Victoria) (No. 14)</i> |

| # | Relevant date/s | Measures |
|-----|--------------------------------------|--|
| 98 | 17 February 2021 to 26 February 2021 | <i>Stay Safe Directions (Victoria) (No. 15)</i> |
| 99 | 26 February 2021 to 15 March 2021 | <i>Stay Safe Directions (Victoria) (No. 16)</i> |
| 100 | 2 March 2021 to 28 March 2021 | <i>COVID-19 Omnibus (Emergency Measures) (Commercial Leases and Licences) Amendment Regulations 2021 (Vic) (S.R. No. 10/2021)</i> enters into force. |
| 101 | 15 March 2021 to 26 March 2021 | <i>Stay Safe Directions (Victoria) (No. 17)</i> |
| 102 | 26 March 2021 to 9 April 2021 | <i>Stay Safe Directions (Victoria) (No. 18)</i> |

ANNEXURE D – Measures promulgated at the Queensland level

ANNEXURE D – Measures promulgated at the Queensland level

| # | Relevant Date(s) | Measures |
|----|--|---|
| 1 | Declaration made 29 January 2020 | Public Health Emergency Order declared under Public Health Act 2005 |
| 2 | Assented to 19 March 2020 | Public Health and Other Legislation (Public Health Emergency) Amendment Act 2020 |
| 3 | 18 March 2020 | Ministerial Statement made by the Queensland Premier |
| 4 | 9:59pm 19 March 2020 – 6:32pm 21 March 2020 | Non-essential Indoor Gatherings Direction made by the Queensland Chief Health Officer |
| 5 | 9:59pm 19 March 2020 - 6:32pm 21 March 2020 | Mass Gatherings Direction made by the Queensland Chief Health Officer |
| 6 | 20 March 2020 | Announcement by Queensland Premier as reported in a Brisbane Times article |
| 7 | 22 March 2020 | Announcement by Queensland Premier as reported in a Brisbane Times article |
| 8 | 6:32pm 21 March 2020 – 11:59pm 2 April 2020 | Mass Gatherings Direction (No. 2) made by the Queensland Chief Health Officer |
| 9 | Noon 23 March 2020 – 11:59pm 25 March 2020 | Non-essential Business Closure Direction made by the Queensland Chief Health Officer |
| 10 | 24 March 2020 | Media Statement from the Queensland Premier |
| 11 | 11:59pm 25 March 2020 – 9:46pm 26 March 2020 | Non-essential business, activity and undertaking Closure Direction made by the Queensland Chief Health Officer |
| 12 | 12:00am 25 March 2020 - 3:25pm 31 March 2020 | Border Restrictions Direction made by the Queensland Chief Health Officer |
| 13 | 9:46pm 26 March 2020 – 10:43pm 27 March 2020 | Non-essential business, activity and undertaking Closure Direction (No.2) made by the Queensland Chief Health Officer |
| 14 | 26 March 2020 to 31 December 2020 | Notification of takeaway liquor authority No. 3, under the Liquor Act 1992 (QLD) s 235C |
| 15 | 3:25pm 31 March 2020 to 10:40pm 2 April 2020 | Border Restrictions Direction (No. 2) made by the Queensland Chief Health Officer |
| 16 | 10:43pm 27 March 2020 - 1:32pm 31 March 2020 | Non-essential business, activity and undertaking Closure Direction (No 3) made by the Queensland Chief Health Officer |

| # | Relevant Date(s) | Measures |
|----|--|---|
| 17 | 11:59pm 29 March 2020 - 11:59pm 2 April 2020 | Home confinement Direction made by the Queensland Chief Health Officer |
| 18 | 1:32pm 31 March 2020 - 8:22pm 9 April 2020 | Non-essential business, activity and undertaking Closure Direction (No 4) made by the Queensland Chief Health Officer |
| 19 | 10:40pm 2 April 2020 - 7:49am 10 April 2020 | Border Restrictions Direction (No. 3) made by the Queensland Chief Health Officer |
| 20 | 11:59pm 2 April 2020 - 11:59pm 26 April 2020 | Home Confinement, Movement and Gathering Direction made by the Queensland Chief Health Officer |
| 21 | 11:59pm 6 April 2020 – 1:35pm 11 June 2020 | Restricting Cruise Ships from Entering Queensland Waters Direction made by the Queensland Chief Health Officer |
| 22 | 8 April 2020 | Media Statement from the Queensland Premier |
| 23 | 9 April 2020 | Media Statement from the Queensland Premier |
| 24 | 8:22pm 9 April 2020 – 8:10pm 21 April 2020 | Non-essential business, activity and undertaking Closure Direction (No 5) made by the Queensland Chief Health Officer |
| 25 | 7:49am 10 April 2020 - 11:25pm 1 May 2020 | Border Restrictions Direction (No. 4) made by the Queensland Chief Health Officer |
| 26 | 8:10pm 21 April 2020 - 8:48pm 24 April 2020 | Non-essential business, activity and undertaking Closure Direction (No 6) made by the Queensland Chief Health Officer |
| 27 | 8:48pm 24 April 2020 - 11:25pm 1 May 2020 | Non-essential business, activity and undertaking Closure Direction (No 7) made by the Queensland Chief Health Officer |
| 28 | 25 April 2020 | Department of Health media release – Queensland novel coronavirus (COVID-19) update |
| 29 | 26 April 2020 | Ministerial Media Statements - Joint Statement from Queensland Premier and Minister for Health |
| 30 | 11:59pm 26 April 2020 – 11:25pm 1 May 2020 | Home Confinement, Movement and Gathering Direction (No 2) made by the Queensland Chief Health Officer |

| # | Relevant Date(s) | Measures |
|----|---|--|
| 31 | 10:05am 28 April 2020 – 8:56am 19 May 2020 | Self-isolation for Diagnosed Cases of COVID-19 Direction (No 2) made by the Queensland Chief Health Officer |
| 32 | 11:25pm 1 May 2020 - 12:01pm 3 July 2020 | Border Restrictions Direction (No. 5) made by the Queensland Chief Health Officer |
| 33 | 11:25pm 1 May 2020 – 2:42pm 8 May 2020 | Home Confinement, Movement and Gathering Direction (No 3) made by the Queensland Chief Health Officer |
| 34 | 11:25pm 1 May 2020 – 6:20pm 8 May 2020 | Non-Essential Business, Activity and Undertaking Closure Direction (No 8) made by the Queensland Chief Health Officer |
| 35 | 2:42pm 8 May 2020 – 11:59pm 15 May 2020 | Home Confinement, Movement and Gathering Direction (No 4) made by the Queensland Chief Health Officer |
| 36 | 6:20pm 8 May 2020 -11:59pm 5 May 2020 | Non-Essential Business, Activity and Undertaking Closure Direction (No 9) made by the Queensland Chief Health Officer |
| 37 | 11:59pm 15 May 2020 - 5:26pm 19 May 2020 | Home Confinement, Movement and Gathering Direction (No 5) made by the Queensland Chief Health Officer |
| 38 | 11:59pm 15 May 2020 - Noon 1 June 2020 | Non-Essential Business, Activity and Undertaking Closure Direction (No 10) made by the Queensland Chief Health Officer |
| 39 | 5:26pm 19 May 2020 - Noon 1 June 2020 | Home Confinement, Movement and Gathering Direction (No 6) made by the Queensland Chief Health Officer |
| 40 | Noon 1 June 2020 - Noon 3 July 2020 | Movement and Gathering Direction made by the Queensland Chief Health Officer |
| 41 | Noon 1 June 2020 - 9:40pm 15 June 2020 | Restrictions on Businesses, Activities and Undertakings Direction made by the Queensland Chief Health Officer |
| 42 | 1:35pm 11 June 2020 – Current as at 26 May 2021 | Restricting Cruise Ships from Entering Queensland Waters Direction (No 2) made by the Queensland Chief Health Officer |
| 43 | 6:00am 16 June 2020 - Noon 3 July 2020 | Restrictions on Businesses, Activities and Undertakings Direction (No 2) made by the Queensland Chief Health Officer |

| # | Relevant Date(s) | Measures |
|----|--|--|
| 44 | 12:01pm 3 July 2020 - 10:30pm 8 July 2020 | Border Restrictions Direction (No. 6) made by the Queensland Chief Health Officer |
| 45 | Noon 3 July 2020 - 8:00am 22 August 2020 | Movement and Gathering Direction (No 2) made by the Queensland Chief Health Officer |
| 46 | Noon 3 July 2020 – 4:40pm 10 July 2020 | Restrictions on Businesses, Activities and Undertakings Direction (No 3) made by the Queensland Chief Health Officer |
| 47 | 10:30pm 8 July 2020 - 12:01pm 10 July 2020 | Border Restrictions Direction (No. 7) made by the Queensland Chief Health Officer |
| 48 | 12:01pm 10 July 2020 - 5:00pm 27 July 2020 | Border Restrictions Direction (No. 8) made by the Queensland Chief Health Officer |
| 49 | 4:40pm 10 July 2020 - 9:55pm 24 July 2020 | Restrictions on Businesses, Activities and Undertakings Direction (No 4) made by the Queensland Chief Health Officer |
| 50 | 9:55pm 24 July 2020 - 1:00am 1 October 2020 | Restrictions on Businesses, Activities and Undertakings Direction (No 5) made by the Queensland Chief Health Officer |
| 51 | 5:00pm 27 July 2020 - 10:00pm 31 July 2020 | Border Restrictions Direction (No. 9) made by the Queensland Chief Health Officer |
| 52 | 10:00pm 31 July 2020 - 1:00am 8 August 2020 | Border Restrictions Direction (No. 10) made by the Queensland Chief Health Officer |
| 53 | 1:00am 8 August 2020 - 1:00am 20 August 2020 | Border Restrictions Direction (No. 11) made by the Queensland Chief Health Officer |
| 54 | 1:00am 20 August 2020 - 1:00am 5 September 2020 | Border Restrictions Direction (No. 12) made by the Queensland Chief Health Officer |
| 55 | 8:00am 22 August 2020 – 11:30am 2 September 2020 | Movement and Gathering Direction (No 3) made by the Queensland Chief Health Officer |
| 56 | 11:30am 2 September 2020 - 4:00pm 16 October 2020 | Movement and Gathering Direction (No 4) made by the Queensland Chief Health Officer |
| 57 | 1:00am 5 September 2020 - 3:00pm 23 September 2020 | Border Restrictions Direction (No. 13) made by the Queensland Chief Health Officer |
| 58 | 3:00pm 23 September 2020 - 1:00am 1 October 2020 | Border Restrictions Direction (No. 14) made by the Queensland Chief Health Officer |
| 59 | 1:00am 1 October 2020 - 3:00pm 30 October 2020 | Border Restrictions Direction (No. 15) made by the Queensland Chief Health Officer |

| # | Relevant Date(s) | Measures |
|----|---|---|
| 60 | 1:00am 1 October 2020 - 4:00pm 2 October 2020 | Restrictions on Businesses, Activities and Undertakings Direction (No 6) made by the Queensland Chief Health Officer |
| 61 | 4:00pm 2 October 2020 - 4:00pm 16 October 2020 | Restrictions on Businesses, Activities and Undertakings Direction (No 7) made by the Queensland Chief Health Officer |
| 62 | 4:00pm 16 October 2020 – 4:00pm 17 November 2020 | Movement and Gathering Direction (No 5) made by the Queensland Chief Health Officer |
| 63 | 4:00pm 16 October 2020 – 4:00pm 17 November 2020 | Restrictions on Businesses, Activities and Undertakings Direction (No 8) made by the Queensland Chief Health Officer |
| 64 | 1:20pm 26 October 2020 – 1:00am 12 December 2020 | Self-quarantine for Persons Arriving in Queensland From Overseas Direction (No 6) made by the Queensland Chief Health Officer |
| 65 | 3:00pm 30 October 2020 - 1:00am 3 November 2020 | Border Restrictions Direction (No. 16) made by the Queensland Chief Health Officer |
| 66 | 1:00am 3 November 2020 - 1:00am 1 December 2020 | Border Restrictions Direction (No. 17) made by the Queensland Chief Health Officer |
| 67 | 1:00am 1 December 2020 - 5:00pm 16 December 2020 | Border Restrictions Direction (No. 18) made by the Queensland Chief Health Officer |
| 68 | 4:00pm 17 November 2020 - 1:00am 1 December 2020 | Movement and Gathering Direction (No 6) made by the Queensland Chief Health Officer |
| 69 | 4:00pm 17 November 2020 – 1:40pm 26 November 2020 | Restrictions on Businesses, Activities and Undertakings Direction (No 9) made by the Queensland Chief Health Officer |
| 70 | 1:40pm 26 November 2020 - Noon 14 December 2020 | Restrictions on Business, Activities and Undertakings Direction (No 10) made by the Queensland Chief Health Officer |
| 71 | 1:00am 1 December 2020 – 1:00am 13 March 2021 | Movement and Gathering Direction (No 7) made by the Queensland Chief Health Officer |
| 72 | Noon 14 December 2020 – 1:00am 23 December 2020 | Restrictions on Business, Activities and Undertakings Direction (No 11) made by the Queensland Chief Health Officer |
| 73 | 1:00am 19 December 2020 - 1:00am 20 December 2020 | Border Restrictions Direction (No. 19) made by the Queensland Chief Health Officer |
| 74 | 1:00am 20 December 2020 - 1:00am 22 December 2020 | Border Restrictions Direction (No. 20) made by the Queensland Chief Health Officer |

| # | Relevant Date(s) | Measures |
|----|--|--|
| 75 | 1:00am 22 December 2020 - 10:30pm 31 January 2021 | Border Restrictions Direction (No. 21) made by the Queensland Chief Health Officer |
| 76 | 1:00am 23 December - 4:40pm 17 February 2021 | Restrictions on Business, Activities and Undertakings Direction (No 12) made by the Queensland Chief Health Officer |
| 77 | 6:00pm 8 January 2021 – 6:00pm 11 January 2021 | Restrictions for Impacted Areas Direction made by the Queensland Chief Health Officer |
| 78 | 8 January 2021 | Media Statement from the Premier and Minister for Trade |
| 79 | 6:00pm 11 January 2021 - 1:00am 22 January 2021 | Restrictions for Impacted Areas Direction No. 2 made by the Queensland Chief Health Officer |
| 80 | 10:30pm 31 January 2021 - 12:00pm 22 February 2021 | Border Restrictions Direction (No. 22) made by the Queensland Chief Health Officer |
| 81 | 4:40pm 17 February 2021 - 8:00am 28 February 2021 | Restrictions on Businesses, Activities and Undertakings Direction (No 13) made by the Queensland Chief Health Officer |
| 82 | 12:00pm 22 February 2021 - 3:45pm 17 March 2021 | Border Restrictions Direction (No. 23) made by the Queensland Chief Health Officer |
| 83 | 8:00am 28 February 2021 - 8 March 2021 | Restrictions on Businesses, Activities and Undertakings Direction (No 14) made by the Queensland Chief Health Officer |
| 84 | 8 March 2021 – 1:00am 13 March 2021 | Restrictions on Business, Activities and Undertakings Direction (No 15) made by the Queensland Chief Health Office |
| 85 | 1:00am 13 March 2021 - 29 March 2021 | Movement and Gathering Direction (No 8) made by the Queensland Chief Health Officer |
| 86 | 1:00am 13 March 2021 - 11:00am 13 April 2021 | Restrictions on Business, Activities and Undertakings Direction (No 16) made by the Queensland Chief Health Officer |
| 87 | 5:00pm 29 March 2021 – 12:00pm 1 April 2021 | Restrictions for Impacted Areas Direction No 3 made by the Queensland Chief Health Officer Revocation of Restrictions for Impacted Areas Direction (No 3) made by the Queensland Chief Health Officer |

| # | Relevant Date(s) | Measures |
|----|--|---|
| 88 | 11:00am 13 April 2021 - 6:00am 15 April 2021 | <u>Restrictions on Business, Activities and Undertakings Direction (No 17) made by the Queensland Chief Health Officer</u> |
| 89 | 6:00am 15 April 2021 – Current as at 26 May 2021 | <u>Movement and Gathering Direction (No 9) made by the Queensland Chief Health Officer</u> |
| 90 | 6:00am 15 April 2021 - 8:00am 1 May 2021 | <u>Restrictions on Business, Activities, and Undertakings Direction (No 18) made by the Queensland Chief Health Officer</u> |
| 91 | 12:01am 24 April 2021 - 7 June 2021 | <u>Border Restrictions Direction (No. 24) made by the Queensland Chief Health Officer</u> |
| 92 | 8:00am 1 May 2021 – Current as at 26 May 2021 | <u>Restrictions on Business, Activities and Undertakings Direction (No 19) made by the Queensland Chief Health Officer</u> |
| 93 | 1:00am 19 June 2021 - 1:00am 28 June 2021 | <u>Border Restrictions Direction (No. 25) made by the Queensland Chief Health Officer</u> |
| 94 | 1:00am 28 June 2021 - Current as at 6 July 2021 | <u>Border Restrictions Direction (No. 26) made by the Queensland Chief Health Officer</u> |

[not used]

ANNEXURE E – Measures promulgated at the South Australian level

ANNEXURE E – Measures promulgated at the South Australian level

| # | Relevant Date(s) | Measures |
|----|--|---|
| 1. | 2:00pm 15 March 2020 - 29 March 2020 | <u>Declaration of a Public Health Emergency under the <i>South Australian Public Health Act 2011</i> (SA) made by the Chief Executive of the Department for Health and Wellbeing in the State of South Australia</u> |
| 2. | 18 March 2020 | <u>Premier Marshall, Stronger Powers to Enforce COVID-19 Self Isolation provided by the Premier</u> |
| 3. | 4:45pm 18 March 2020 - 1:30pm 22 March 2020 | <u>Direction of the Chief Executive of the Department for Health and Wellbeing in relation to Mass Gatherings under the <i>South Australian Public Health Act 2011</i> (SA) made by the Chief Executive of the Department for Health and Wellbeing in the State of South Australia</u> |
| 4. | 22 March 2020 | <u>S Marshall (SA Premier), South Australia's borders to close, media release, 22 March 2020. provided by the Premier</u> |
| 5. | 1:30pm 22 March 2020 – 12:01am 28 March 2020 | <u>Mass Gatherings Directions (No 2) made by the Chief Executive of the Department for Health and Wellbeing in the State of South Australia</u> |
| 6. | 1:00pm 22 March 2020 - 1 May 2021 | <u>Declaration of a Major Emergency</u> which was extended on: <ul style="list-style-type: none"> • 4 April 2020; • 2 May 2020; • 30 May 2020; • 27 June 2020; • 25 July 2020; • 22 August 2020; • 19 September 2020; • 17 October 2020; • 14 November 2020; |

| # | Relevant Date(s) | Measures |
|-----|---|---|
| | | <ul style="list-style-type: none"> • 12 December 2020; • 9 January 2021; • 6 February 2021; • 6 March 2021; • 3 April 2021; and • 1 May 2021. |
| 7. | 11:00am 24 March 2020 to 12:01am 29 March 2020 | <i>Cross-border Travel Direction made by the State Co-ordinator for the State of South Australia</i> |
| 8. | 25 March 2020 | <i>S Marshall (SA Premier), Health Heroes' Hotel, media release, 25 March 2020 provided by the Premier</i> |
| 9. | 1:40pm 23 March 2020 - 11:59pm 25 March 2020 | <i>Non-Essential Business (and Other Gatherings) Closure Direction made by the State Co-ordinator for the State of South Australia</i> |
| 10. | 11:59pm 25 March 2020 – 12:01am 28 March 2020 | <i>Non-Essential Business (and Other Gatherings) Closure Direction (No 2) made by the State Co-ordinator for the State of South Australia</i> |
| 11. | 12:01am 28 March 2020 – 12:01am 31 March 2020 | <i>Emergency Management (Non-Essential Business and Other Activities) (COVID-19) Direction 2020 made by the State Co-ordinator for the State of South Australia</i> |
| 12. | 12:01am 28 March 2020 – 10:10am 16 April 2020 | <i>Emergency Management (Gatherings) (COVID-19) Direction 2020 made by the State Co-ordinator for the State of South Australia</i> |
| 13. | 28 March 2020 | <i>S Marshall (SA Premier), New process to control spread of COVID-19, media release, 28 March 2020, provided by the Premier</i> |
| 14. | 29 March 2020 at 12:01am - 11:59pm on 16 April 2020 | <i>Emergency Management (Cross Border Travel No 2)(COVID-19) Direction 2020 made by the State Co-ordinator for the State of South Australia</i> |
| 15. | 12:01am 31 March 2020 – 12:01am 10 April | <i>Emergency Management (Non-Essential Business and Other Activities No 2)(COVID-19) Direction 2020</i> |

| # | Relevant Date(s) | Measures |
|-----|--|--|
| | 2020 | made by the State Co-ordinator for the State of South Australia |
| 16. | 4 April 2020 | S Marshall (SA Premier), For the health and wellbeing of all South Australians—please stay home this Easter, media release, 4 April 2020 |
| 17. | 12:01am 10 April 2020 – 11:00am 15 April 2020 | Emergency Management (Non-Essential Business and Other Activities No 3)(COVID-19) Direction 2020 made by the State Co-ordinator for the State of South Australia |
| 18. | 11:00am 15 April 2020 – 12:01am 11 May 2020 | Emergency Management (Non-Essential Business and Other Activities No 4)(COVID-19) Direction 2020 made by the State Co-ordinator for the State of South Australia |
| 19. | 11:59pm 16 April 2020 - 12:01am on 11 May 2020 | Emergency Management (Cross Border Travel No 3)(COVID-19) Direction 2020 made by the State Co-ordinator for the State of South Australia |
| 20. | 10:10am 16 April 2020 – 12:01am 22 May 2020 | Emergency Management (Gatherings No 2) (COVID-19) Direction 2020 made by the State Co-ordinator for the State of South Australia |
| 21. | 12:01am 11 May 2020 - 12:01am 17 June 2020 | Emergency Management (Cross Border Travel No 4)(COVID-19) Direction 2020 made by the State Co-ordinator for the State of South Australia |
| 22. | 12:01am 11 May 2020 – 12:01am 22 May 2020 | Emergency Management (Non-Essential Business and Other Activities No 5)(COVID-19) Direction 2020 made by the State Co-ordinator for the State of South Australia |
| 23. | 12:01am 22 May 2020 – 5:30pm 22 May 2020 | Emergency Management (Non-Essential Business and Other Activities No 6)(COVID-19) Direction 2020 made by the State Co-ordinator for the State of South Australia |
| 24. | 5:30pm 22 May 2020 – 12:01am 1 June 2020 | Emergency Management (Non-Essential Business and Other Activities No 7)(COVID-19) Direction 2020 made by the State Co-ordinator for the State of South Australia |
| 25. | 12:01am 22 May 2020 – 12:01am 1 June 2020 | Emergency Management (Gatherings No 3) (COVID-19) Direction 2020 made by the State Co-ordinator for the State of South Australia |
| 26. | 12:01am 1 June 2020 – 12:01am 19 June 2020 | Emergency Management (Public Activities) (COVID-19) Direction 2020 made by the State Co-ordinator for the State of South Australia |
| 27. | 12:01am 17 June 2020 - 12:01am 19 June | Emergency Management (Cross Border Travel No 5) (COVID-19) Direction 2020 made by the State Co- |

| # | Relevant Date(s) | Measures |
|-----|---|--|
| | 2020 | <u>ordinator for the State of South Australia</u> |
| 28. | 12:01am 19 June 2020 - 12:01am 20 June 2020 | <u>Emergency Management (Cross Border Travel No 6) (COVID-19) Direction 2020 made by the State Co-ordinator for the State of South Australia</u> |
| 29. | 12:01am 19 June 2020 – 12:01am 29 June 2020 | <u>Emergency Management (Public Activities No 2) (COVID-19) Direction 2020 made by the State Co-ordinator for the State of South Australia</u> |
| 30. | 12:01am 20 June 2020 - 12:01am 9 July 2020 | <u>Emergency Management (Cross Border Travel No 7) (COVID-19) Direction 2020 made by the State Co-ordinator for the State of South Australia</u> |
| 31. | 12:01am 29 June 2020 – 12:01am 9 July 2020 | <u>Emergency Management (Public Activities No 3)(COVID-19) Direction 2020 made by the State Co-ordinator for the State of South Australia</u> |
| 32. | 12:01am 9 July 2020 - 12:01am 19 July 2020 | <u>Emergency Management (Cross Border Travel No 8)(COVID-19) Direction 2020 made by the State Co-ordinator for the State of South Australia</u> |
| 33. | 12:01am 9 July 2020 – 12:01am 29 July 2020 | <u>Emergency Management (Public Activities No 4)(COVID-19) Direction 2020 made by the State Co-ordinator for the State of South Australia</u> |
| 34. | 12:01am 19 July 2020 - 12:01am 29 July 2020 | <u>Emergency Management (Cross Border Travel No 9)(COVID-19) Direction 2020 made by the State Co-ordinator for the State of South Australia</u> |
| 35. | 12:01am 29 July 2020 - 12:01am 14 August 2020 | <u>Emergency Management (Cross Border Travel No 10)(COVID-19) Direction 2020 made by the State Co-ordinator for the State of South Australia</u> |
| 36. | 12:01am 29 July 2020 – 12:01am 5 August 2020 | <u>Emergency Management (Public Activities No 5)(COVID-19) Direction 2020 made by the State Co-ordinator for the State of South Australia</u> |
| 37. | 12:01am 5 August 2020 – 12:01am 14 August 2020 | <u>Emergency Management (Public Activities No 6)(COVID-19) Direction 2020 made by the State Co-ordinator for the State of South Australia</u> |
| 38. | 12:01am 14 August 2020 - 12:01am 21 August 2020 | <u>Emergency Management (Cross Border Travel No 11)(COVID-19) Direction 2020 made by the State Co-ordinator for the State of South Australia</u> |
| 39. | 12:01am 14 August 2020 – 12:01am 28 | <u>Emergency Management (Public Activities No 7)(COVID-19) Direction 2020 made by the State Co-ordinator</u> |

| # | Relevant Date(s) | Measures |
|-----|---|--|
| | August 2020 | <u>for the State of South Australia</u> |
| 40. | 12:01am 21 August 2020 - 12:01am 28 August 2020 | <u>Emergency Management (Cross Border Travel No 12)(COVID-19) Direction 2020 made by the State Co-ordinator for the State of South Australia</u> |
| 41. | 12:01am 28 August 2020 - 12:01am 16 September 2020 | <u>Emergency Management (Cross Border Travel No 13)(COVID-19) Direction 2020 made by the State Co-ordinator for the State of South Australia</u> |
| 42. | 12:01am 28 August 2020 – 12:01am 5 September 2020 | <u>Emergency Management (Public Activities No 8)(COVID-19) Direction 2020 made by the State Co-ordinator for the State of South Australia</u> |
| 43. | 12:01am 5 September 2020 – 12:01am 3 October 2020 | <u>Emergency Management (Public Activities No 9) (COVID-19) Direction 2020 made by the State Co-ordinator for the State of South Australia</u> |
| 44. | 12:01am 16 September 2020 - 12:01am 24 September 2020 | <u>Emergency Management (Cross Border Travel No 14)(COVID-19) Direction 2020 made by the State Co-ordinator for the State of South Australia</u> |
| 45. | 12:01am 24 September 2020 - 12:01am 8 October 2020 | <u>Emergency Management (Cross Border Travel No 15)(COVID-19) Direction 2020 made by the State Co-ordinator for the State of South Australia</u> |
| 46. | 12:01am 3 October 2020 – 12:01am 17 November 2020 | <u>Emergency Management (Public Activities No 10)(COVID-19) Direction 2020 made by the State Co-ordinator for the State of South Australia</u> |
| 47. | 12:01am 8 October 2020 - 12:01am 24 October 2020 | <u>Emergency Management (Cross Border Travel No 16)(COVID-19) Direction 2020 made by the State Co-ordinator for the State of South Australia</u> |
| 48. | 12:01am 24 October 2020 - 12:01am 4 November 2020 | <u>Emergency Management (Cross Border Travel No 17)(COVID-19) Direction 2020 made by the State Co-ordinator for the State of South Australia</u> |
| 49. | 12:01am 4 November 2020 - 12:01am 22 November 2020 | <u>Emergency Management (Cross Border Travel No 18)(COVID-19) Direction 2020 made by the State Co-ordinator for the State of South Australia</u> |
| 50. | 12:01am 17 November 2020 – 12:01am 22 November 2020 | <u>Emergency Management (Public Activities No 11)(COVID-19) Direction 2020 made by the State Co-ordinator for the State of South Australia</u> |
| 51. | 12:01am 19 November 2020 – 11:30am 20 | <u>Emergency Management (Stay at Home) (COVID-19) Direction 2020 made by the State Co-ordinator for the</u> |

| # | Relevant Date(s) | Measures |
|-----|---|---|
| | November 2020 | <u>State of South Australia</u> |
| 52. | 12:01am 20 November 2020 – 11:30am 20 November 2020 | <u>Emergency Management (Stay at Home No 2) (COVID-19) Direction 2020 made by the State Co-ordinator for the State of South Australia</u> |
| 53. | 11:30am 20 November 2020 – 12:01am 22 November 2020 | <u>Emergency Management (Stay at Home No 3) (COVID-19) Direction 2020 made by the State Co-ordinator for the State of South Australia</u> |
| 54. | 12:01am 22 November 2020 - 12:01am 1 December 2020 | <u>Emergency Management (Cross Border Travel No 19)(COVID-19) Direction 2020 made by the State Co-ordinator for the State of South Australia</u> |
| 55. | 12:01am 22 November 2020 – 12:01am 1 December 2020 | <u>Emergency Management (Public Activities No 12)(COVID-19) Direction 2020 made by the State Co-ordinator for the State of South Australia</u> |
| 56. | 12:01am 1 December 2020 - 12:01am 14 December 2020 | <u>Emergency Management (Cross Border Travel No 20)(COVID-19) Direction 2020 made by the State Co-ordinator for the State of Southz Australia</u> |
| 57. | 12:01am 1 December 2020 – 12:01am 1 December 2020 | <u>Emergency Management (Public Activities No 13)(COVID-19) Direction 2020 made by the State Co-ordinator for the State of South Australia</u> |
| 58. | 12:01am 1 December 2020 – 5:50pm 4 December 2020 | <u>Emergency Management (Public Activities No 14)(COVID-19) Direction 2020 made by the State Co-ordinator for the State of South Australia</u> |
| 59. | 5:50pm 4 December 2020 – 12:01am 14 December 2020 | <u>Emergency Management (Public Activities No 15)(COVID-19) Direction 2020 made by the State Co-ordinator for the State of South Australia</u> |
| 60. | 12:01am 14 December 2020 - 12:01am 14 December 2020 | <u>Emergency Management (Cross Border Travel No 21)(COVID-19) Direction 2020 made by the State Co-ordinator for the State of South Australia</u> |
| 61. | 12:01am 14 December 2020 - 7:56pm 18 December 2020 | <u>Emergency Management (Cross Border Travel No 22)(COVID-19) Direction 2020 made by the State Co-ordinator for the State of South Australia</u> |
| 62. | 12:01am 14 December 2020 – 12:01am 22 January 2021 | <u>Emergency Management (Public Activities No 16)(COVID-19) Direction 2020 made by the State Co-ordinator for the State of South Australia</u> |
| 63. | 7:56pm 18 December 2020 - 5:20pm 19 | <u>Emergency Management (Cross Border Travel No 23)(COVID-19) Direction 2020 made by the State Co-</u> |

| # | Relevant Date(s) | Measures |
|-----|--|--|
| | December 2020 | <u>ordinator for the State of South Australia</u> |
| 64. | 5:20pm 19 December 2020 - 12:01am 21 December 2020 | <u>Emergency Management (Cross Border Travel No 24)(COVID-19) Direction 2020 made by the State Co-ordinator for the State of South Australia</u> |
| 65. | 12:01am 21 December 2020 - 12:01am 1 January 2021 | <u>Emergency Management (Cross Border Travel No 25)(COVID-19) Direction 2020 made by the State Co-ordinator for the State of South Australia</u> |
| 66. | 12:01am 1 January 2021 - 12:01am 9 January 2021 | <u>Emergency Management (Cross Border Travel No 26)(COVID-19) Direction 2020 made by the State Co-ordinator for the State of South Australia</u> |
| 67. | 12:01am 9 January 2021 - 12:01am 14 January 2021 | <u>Emergency Management (Cross Border Travel No 27)(COVID-19) Direction 2021 made by the State Co-ordinator for the State of South Australia</u> |
| 68. | 12:01am 14 January 2021 - 12:01am 17 January 2021 | <u>Emergency Management (Cross Border Travel No 28)(COVID-19) Direction 2021 made by the State Co-ordinator for the State of South Australia</u> |
| 69. | 12:01am 17 January 2021 - 12:01am 26 January 2021 | <u>Emergency Management (Cross Border Travel No 29)(COVID-19) Direction 2021 made by the State Co-ordinator for the State of South Australia</u> |
| 70. | 12:01am 22 January 2021 – 4:48pm 22 January 2021 | <u>Emergency Management (Public Activities No 17)(COVID-19) Direction 2021 made by the State Co-ordinator for the State of South Australia</u> |
| 71. | 4:48pm 22 January 2021 – 12:01am 17 February 2021 | <u>Emergency Management (Public Activities No 18)(COVID-19) Direction 2021 made by the State Co-ordinator for the State of South Australia</u> |
| 72. | 12:01am 26 January 2021 - 12:01am 31 January 2021 | <u>Emergency Management (Cross Border Travel No 30)(COVID-19) Direction 2021 made by the State Co-ordinator for the State of South Australia</u> |
| 73. | 12:01am 31 January 2021 - 10:15pm 31 January 2021 | <u>Emergency Management (Cross Border Travel No 31)(COVID-19) Direction 2021 made by the State Co-ordinator for the State of South Australia</u> |
| 74. | 10:15pm 31 January 2021 - 2:00pm 2 February 2021 | <u>Emergency Management (Cross Border Travel No 32)(COVID-19) Direction 2021 made by the State Co-ordinator for the State of South Australia</u> |
| 75. | 2:00pm 2 February 2021 - 6:16pm 4 | <u>Emergency Management (Cross Border Travel No 33)(COVID-19) Direction 2021 made by the State Co-</u> |

| # | Relevant Date(s) | Measures |
|-----|---|--|
| | February 2021 | <u>ordinator for the State of South Australia</u> |
| 76. | 6:16pm 4 February 2021 - 3:26pm 5 February 2021 | <u>Emergency Management (Cross Border Travel No 34)(COVID-19) Direction 2021 made by the State Co-ordinator for the State of South Australia</u> |
| 77. | 3:26pm 5 February 2021 - 12:01am 11 February 2021 | <u>Emergency Management (Cross Border Travel No 35)(COVID-19) Direction 2021 made by the State Co-ordinator for the State of South Australia</u> |
| 78. | 12:01am 11 February 2021 - 12:01am 13 February 2021 | <u>Emergency Management (Cross Border Travel No 36)(COVID-19) Direction 2021 made by the State Co-ordinator for the State of South Australia</u> |
| 79. | 12:01am 13 February 2021 - 8:25pm 15 February 2021 | <u>Emergency Management (Cross Border Travel No 37)(COVID-19) Direction 2021 made by the State Co-ordinator for the State of South Australia</u> |
| 80. | 8:25pm 15 February 2021 - 12:01am 18 February 2021 | <u>Emergency Management (Cross Border Travel No 38)(COVID-19) Direction 2021 made by the State Co-ordinator for the State of South Australia</u> |
| 81. | 12:01am 17 February 2021 – 12:01am 26 February 2021 | <u>Emergency Management (Public Activities No 19)(COVID-19) Direction 2021 made by the State Co-ordinator for the State of South Australia</u> |
| 82. | 12:01am 18 February 2021 - 12:01am 26 February 2021 | <u>Emergency Management (Cross Border Travel No 39)(COVID-19) Direction 2021 made by the State Co-ordinator for the State of South Australia</u> |
| 83. | 12:01am 26 February 2021 - 12:01am 20 March 2021 | <u>Emergency Management (Cross Border Travel No 40)(COVID-19) Direction 2021 made by the State Co-ordinator for the State of South Australia</u> |
| 84. | 12:01am 26 February 2021 – 12:01am 31 March 2021 | <u>Emergency Management (Public Activities No 20)(COVID-19) Direction 2021 made by the State Co-ordinator for the State of South Australia</u> |
| 85. | 12:01am 20 March 2021 - 12:01am 27 March 2021 | <u>Emergency Management (Cross Border Travel No 41)(COVID-19) Direction 2021 made by the State Co-ordinator for the State of South Australia</u> |
| 86. | 12:01am 27 March 2021 - 4:00pm 29 March 2021 | <u>Emergency Management (Cross Border Travel No 42)(COVID-19) Direction 2021 made by the State Co-ordinator for the State of South Australia</u> |
| 87. | 12:01am 31 March 2021 – 10:11am 8 April | <u>Emergency Management (Public Activities No 21)(COVID-19) Direction 2021 made by the State Co-</u> |

| # | Relevant Date(s) | Measures |
|-----|---|--|
| | 2021 | <u>ordinator for the State of South Australia</u> |
| 88. | 10:11am 8 April 2021 – 12:46pm 14 April 2021 | <u>Emergency Management (Public Activities No 22)(COVID-19) Direction 2021 made by the State Co-ordinator for the State of South Australia</u> |
| 89. | 12:46pm 14 April 2021 – 1:12pm 7 May 2021 | <u>Emergency Management (Public Activities No 23)(COVID-19) Direction 2021 made by the State Co-ordinator for the State of South Australia</u> |
| 90. | 1:12pm 7 May 2021 – in effect as at 25 May 2021 | <u>Emergency Management (Public Activities No 24)(COVID-19) Direction 2021 made by the State Co-ordinator for the State of South Australia</u> |

Annexure F - LCA Marrickville radius Local Government Areas (LGA) and Postcodes

| LGAs partly within the LCA Marrickville radius | Postcodes wholly within the LCA Marrickville radius | Postcodes partly within the LCA Marrickville radius |
|--|---|--|
| Bayside | 2006 | 2000 |
| Canterbury-Bankstown | 2007 | 2009 |
| Inner West | 2008 | 2010 |
| Sydney | 2015 | 2018 |
| Randwick | 2016 | 2019 |
| | 2017 | 2020 |
| | 2037 | 2021 |
| | 2038 | 2034 {Not agreed: LCA Marrickville does not agree with this amendment} |
| | 2042 | 2032 |
| | 2043 | 2033 |
| | 2044 | 2035 |
| | 2048 | 2039 |
| | 2049 | 2040 |
| | 2050 | 2041 |
| | | 2045 |
| | | 2052 {Not agreed: LCA Marrickville does not agree with this amendment } |
| | | 2131 |
| | | 2193 |
| | | 2205 |
| | | 2206 |
| | | 2207 |
| | | 2216 |

Annexure G - NSW COVID DATA SPREADSHEET

Annexure H - Meridian Travel radius Local Government Areas (LGA) and Postcodes

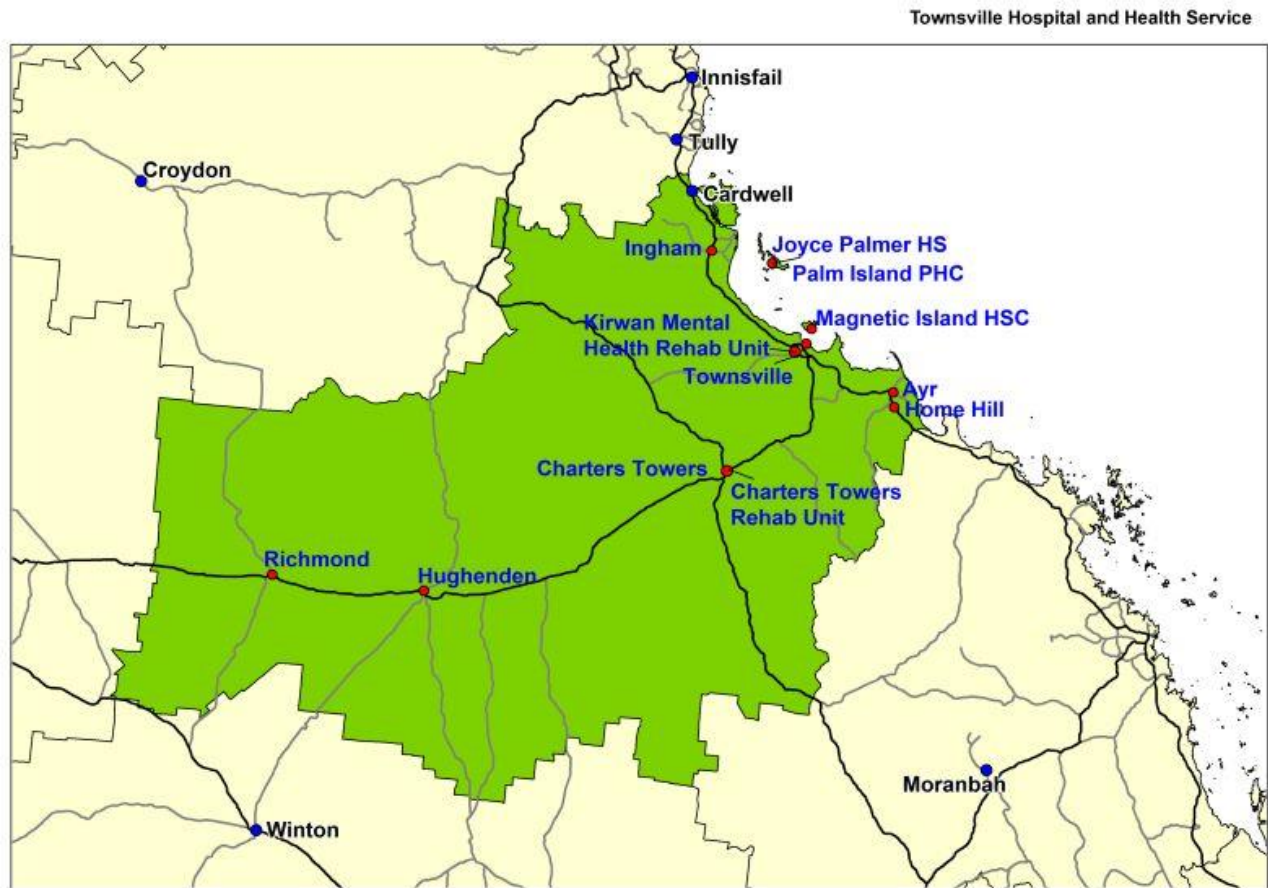
| LGAs partly within the Meridian radius | Postcodes wholly within the Meridian radius | Postcodes partly within the Meridian radius |
|---|--|--|
| Banyule | 3000 | 3012 |
| Bayside | 3002 | 3015 |
| Brimbank | 3003 | 3016 |
| Boroondara | 3004 | 3019 |
| Darebin | 3005 | 3020 |
| Glen Eira | 3006 | 3021 |
| Hobsons Bay | 3008 | 3025 |
| Hume | 3010 | 3033 |
| Kingston | 3011 | 3036 |
| Knox | 3013 | 3042 |
| Maribyrnong | 3031 | 3045 |
| Maroondah | 3032 | 3049 |
| Melbourne | 3034 | 3059 |
| Monash | 3039 | 3064 |
| Moonee Valley | 3040 | 3097 |
| Manningham | 3041 | 3099 |
| Moreland | 3043 | 3115 |
| Nillumbik | 3044 | 3116 |
| Port Phillip | 3046 | 3136 |
| Stonnington | 3047 | 3150 |
| Whitehorse | 3048 | 3152 |
| Yarra | 3050 | 3153 |
| | 3051 | 3165 |
| | 3052 | 3167 |
| | 3053 | 3168 |
| | 3054 | 3169 |
| | 3055 | 3170 |
| | 3056 | 3171 |
| | 3057 | 3179 |
| | 3058 | 3186 |
| | 3060 | 3188 |
| | 3061 | 3189 |
| | 3062 | 3750 |
| | 3065 | 3754 |
| | 3066 | 3759 |
| | 3067 | 3755 |
| | 3068 | |
| | 3070 | |
| | 3071 | |
| | 3072 | |
| | 3073 | |
| | 3074 | |
| | 3075 | |
| | 3076 | |
| | 3078 | |
| | 3079 | |
| | 3081 | |
| | 3082 | |
| | 3083 | |
| | 3084 | |
| | 3085 | |
| | 3086 | |
| | 3087 | |
| | 3088 | |
| | 3089 | |
| | 3090 | |

| LGAs partly within the Meridian radius | Postcodes wholly within the Meridian radius | Postcodes partly within the Meridian radius |
|--|---|---|
| | 3091 | |
| | 3093 | |
| | 3094 | |
| | 3095 | |
| | 3096 | |
| | 3101 | |
| | 3102 | |
| | 3103 | |
| | 3104 | |
| | 3105 | |
| | 3106 | |
| | 3107 | |
| | 3108 | |
| | 3109 | |
| | 3111 | |
| | 3113 | |
| | 3114 | |
| | 3121 | |
| | 3122 | |
| | 3123 | |
| | 3124 | |
| | 3125 | |
| | 3126 | |
| | 3127 | |
| | 3128 | |
| | 3129 | |
| | 3130 | |
| | 3131 | |
| | 3132 | |
| | 3133 | |
| | 3134 | |
| | 3135 | |
| | 3141 | |
| | 3142 | |
| | 3143 | |
| | 3144 | |
| | 3145 | |
| | 3146 | |
| | 3147 | |
| | 3148 | |
| | 3149 | |
| | 3151 | |
| | 3161 | |
| | 3162 | |
| | 3163 | |
| | 3166 | |
| | 3181 | |
| | 3182 | |
| | 3183 | |
| | 3184 | |
| | 3185 | |
| | 3187 | |
| | 3204 | |
| | 3205 | |
| | 3206 | |
| | 3207 | |
| | 3752 | |
| | 3800 | |

Annexure I - VICTORIA COVID DATA SPREADSHEET

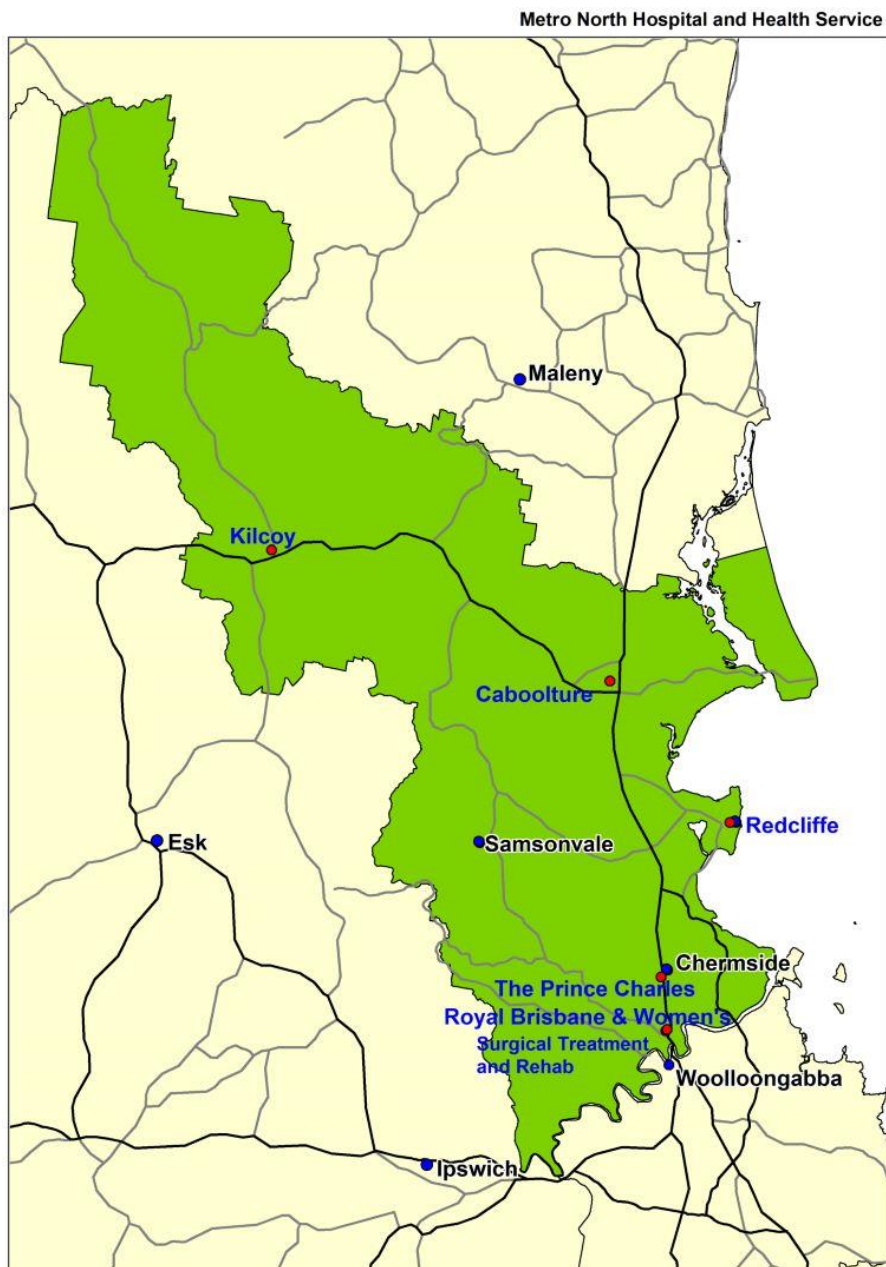
Annexure J

Townsville Hospital and Health Service map



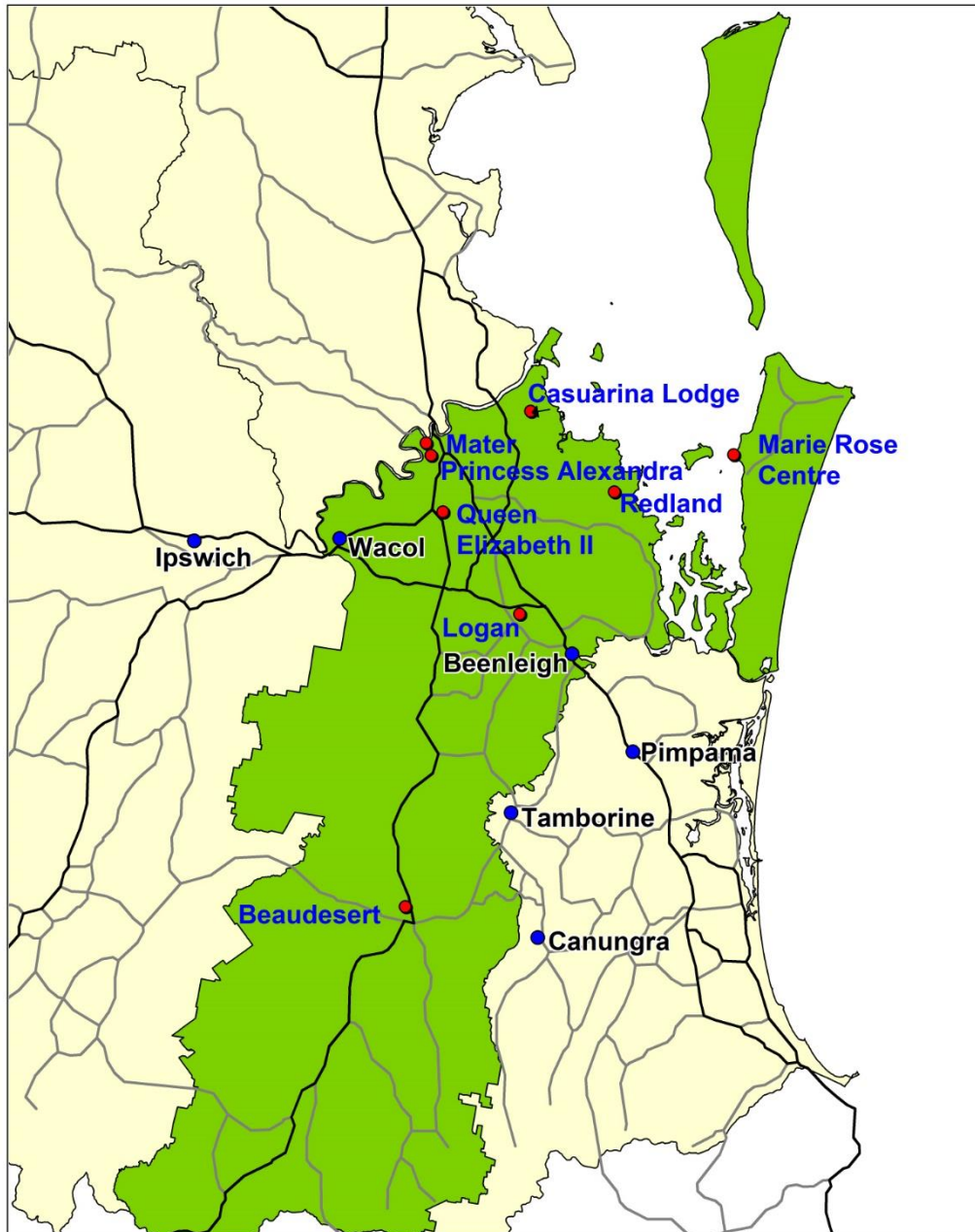
Annexure K

Metro North Hospital and Health Service map



Annexure L

Metro South Hospital and Health Service map

Metro South Hospital and Health Service

Annexure M

Gold Coast Hospital and Health Service map

Gold Coast Hospital and Health Service

