

DAILYTELEGRAPH.COM.AU THURSDAY NOVEMBER 30 2017

05

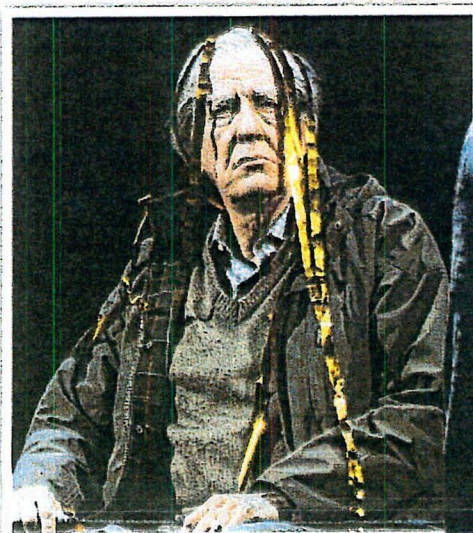
in Sydney Theatre Shakespeare production

“Sydney Theatre Company received a complaint alleging that Mr Geoffrey Rush had engaged in inappropriate behaviour”

STC spokeswoman

“It does not warrant comment except that it is false and untrue”

Lawyer for Rush
Nicholas Pullen



Clockwise from left: Rush and his 1996 Oscar, in *Twelfth Night*; receiving the Order of Australia with Governor-General Peter Cosgrove; in STC's *King Lear*; on location at Sydney Harbour on Tuesday; and (below left) as Einstein in TV series *Genius*. Main picture: Matrix Media Group

“It does not warrant comment except that it is false and untrue.”

Rush has worked with the STC many times — both acting and directing productions like *Uncle Vanya*, *Oleanna*, *The Importance of Being Earnest*, *You Can't Take It With You*, *King Lear* and *The Government Inspector*.

Rush won the Academy Award for Best Actor in 1996 for his role as David Helfgott in the movie *Shine* and was nominated for the best supporting actor role two years later for *Shakespeare in Love*.

His other Oscar nominations include best actor in 2000 film *Quills* and for *The King's Speech* in 2011 in the same category.

He has found fame for becoming one of the few people to have won acting's “Triple Crown” — the Academy Award, the Primetime Emmy Award and the Tony Award.

The 66-year-old married father-of-two and Melbourne resident is also the president of the Australian Academy of Cinema Television and Arts and is expected to attend the annual AACTA Awards at The Star Event Centre next week.



Service to counsel affected Nine staff

CHANNEL Nine has opened an independent counselling service following allegations this week of sexual assault by former TV personality Don Burke as the network's boss Hugh Marks addresses staff for the first time, saying “we cannot rewrite history”.

A new phone line was set up yesterday to allow people to report instances of past behaviour they would like addressed.

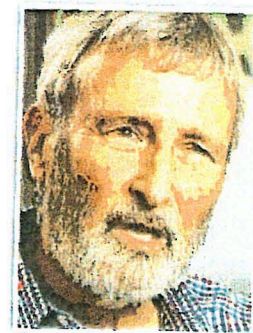
“Former Nine employees with complaints can provide their personal contact details and HR will follow up directly on a strictly confidential basis,” Nine said in an email to staff.

The counselling will be provided at no cost to them, Nine said, and will support the person to “work through any issues that relate to their time” at Nine.

Mr Marks, meanwhile, told staff that allegations of harassment and misconduct by Burke was “appalling”, vowing to deal with misconduct, harassment, discrimination and bullying issues “effectively”.

Burke returned to Nine's *A Current Affair*, this week where he admitted to behaving like a bullying tyrant, and having “a number of affairs”, but cannot remember “exact things I did 20 years ago”.

He has been described as a “sexual predator” and “psychotic bully” during the 17-year run of Burke's *Backyard*. Speaking to ACA host Tracy Grimshaw, he claimed to be a victim of a “witch hunt” ignited by the Harvey Weinstein scandal.



Don Burke being interviewed on ACA.

KIDS AWAKE TO FAKE NEWS

OLDER children are becoming increasingly savvy about fake news on social media.

More than half of youngsters aged 12 to 15 use Facebook and Twitter to access news online — often clicking on stories that have been recommended by “friends” in their network or by users they “follow”. But even though they like to access news in this way,

they are extremely wary about which articles they can trust.

The majority of those in this age group who read news on social media make an effort to check if it is true. Some 86 per cent make “at least one practical attempt” to check the veracity of an article.

For example, they might double check it with mainstream news sources.



Mount Agung in action.

Bali tourist relief as airport reopens

BALI'S airport reopened late yesterday and flights resumed as the amount of volcanic ash from the erupting Mt Agung volcano decreased.

After three days of closure, a decision was made late yesterday for the airport to open.

The decision brought relief to the 150,000 tourists stranded in Bali as a result of the volcano,

which began erupting last week. Yesterday almost 58,000 passengers, on 430 flights, had faced cancellations.

Authorities said while the volcanic ash plume was still reaching 1500-2000m, it had decreased compared to the previous day.

The Volcanology and Geological Hazards Mitigation Cen-

tre chief, Kasbani, said everyone living inside the exclusion zone 8-10km from the crater had been told to leave.

An eruption on Tuesday, which hurled volcanic ash more than 4000m into the air had been the biggest so far, prompting warnings that a large-scale eruption was just hours away. But that has not yet happened.

V1 - TELE3201MA

The Daily Telegraph

WE'RE FOR SYDNEY

\$1.60 // THURSDAY, NOVEMBER 30, 2017

SCOOP

SHORTEN ASIO CALL FOR SAM

KYLAR LOUSSIKIAN

BILL Shorten was so concerned by reports of Sam Dastyari's dealings with a billionaire Chinese donor he called ASIO's top officials to determine if the embattled senator was a national security concern.

The Daily Telegraph understands the Labor leader this week called the domestic spy agency after hearing allegations Mr Dastyari warned the property developer he was under surveillance.

Mr Shorten was advised he did not pose a security risk.

▶ FULL REPORT PAGE 8

SCOOP

GAME ON TO SPY ON KIDS

BRUCE MCDUGALL

TEACHERS will be able to spy on students by using a new program to keep tabs on what pupils are up to on their classroom laptops.

The colour-coding program throws up a "red flag" on the teacher's laptop when a student goes "off-task" on their computer. There are also other colours in the system, like green to show they are on-task and orange if they're searching Google or sending an email.

Six Sydney schools are already testing the software.

▶ FULL REPORT PAGE 3

SCOOP

TRASH TALK ON CAN PLAN

ANNA CALDWELL

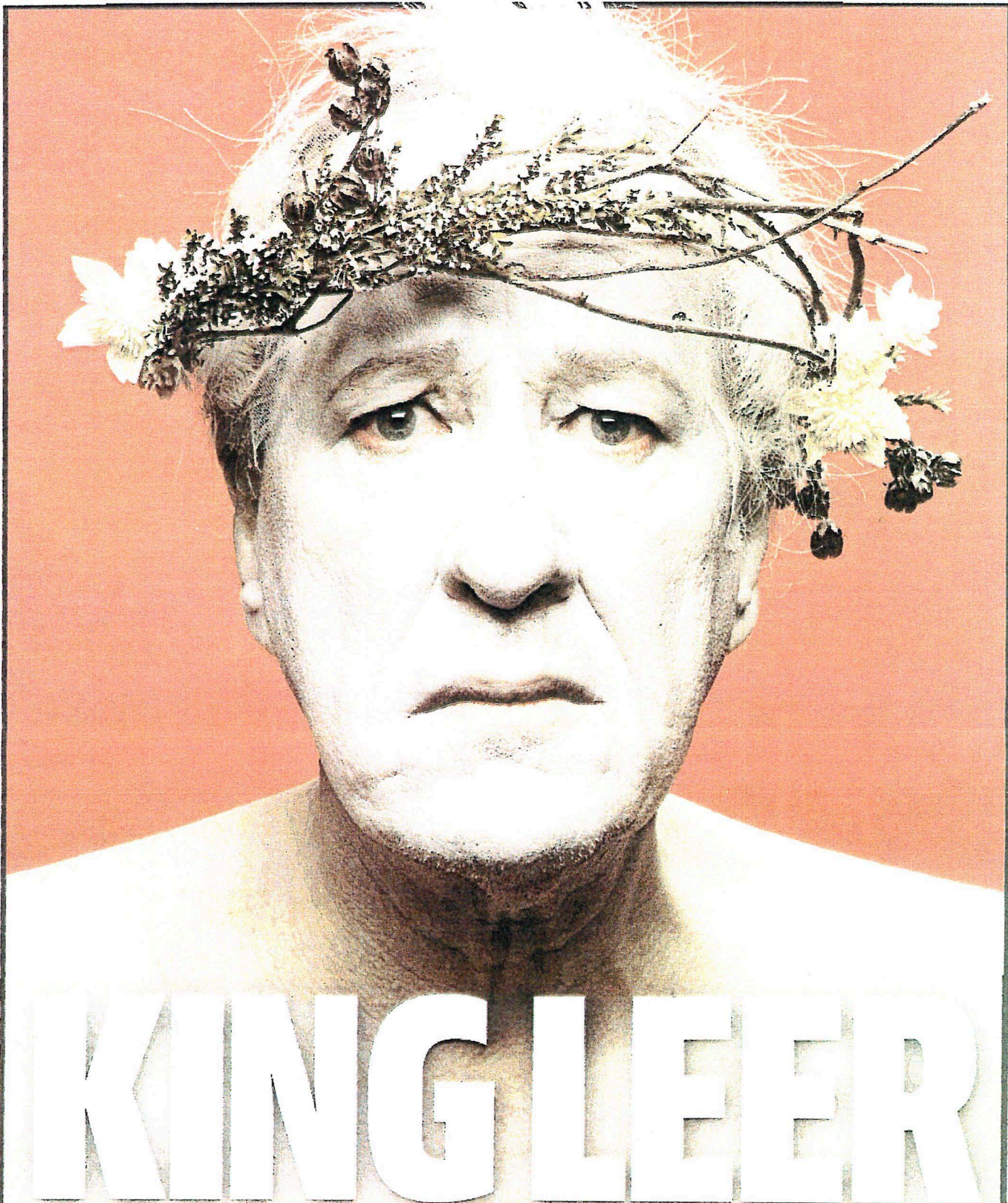
HUNDREDS of vending machines ordered by the state government for its "shambolic" cash for cans scheme breach standards for disabled access, it can be revealed.

It is the latest blow for the recycling plan which is due to cause prices for drinks in bottles and cans to rise from tomorrow, as senior government MPs seethe about its "botched" rollout.

A case of beer or a box of soft-drink cans will increase by up to \$4.80 from tomorrow.

▶ CONTINUED PAGE 4

V1 - TELE2017A



KING LEAR

WORLD EXCLUSIVE

Oscar-winner Rush denies 'inappropriate behaviour' during Sydney stage show

JONATHAN MORAN

OSCAR winning Australian actor Geoffrey Rush has been accused of "inappropriate behaviour" during Sydney Theatre Company's recent production of King Lear.

However, Rush — through his lawyers — last night vigorously

denied the claims. The Sydney Theatre Company told The Daily Telegraph it "received a complaint alleging that Mr Geoffrey Rush had engaged in inappropriate behaviour". "The Company received the complaint when Mr Rush's engagement with the Company had ended," it said. "The Company

continues to work with the complainant to minimise the risk of future instances of the alleged behaviour occurring in its workplace."

Mr Rush's lawyers said he had "not been approached by the Sydney Theatre Company, the alleged complainant nor any

representative of either". "Further, he has not been informed by them of the nature of the complaint and what it involves," a statement from HWL Ebsworth Lawyers said.

"If such a statement has been issued by the STC it is both irresponsible and highly damaging."

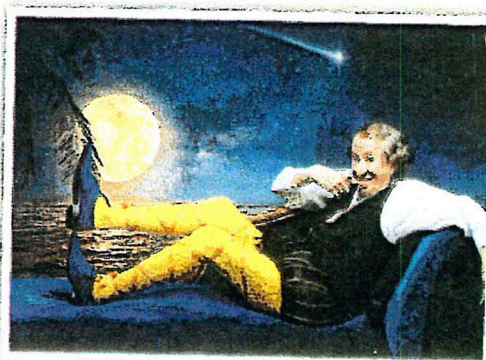
▶ FULL REPORTS PAGES 4-5

04

THURSDAY NOVEMBER 30 2017 DAILYTELEGRAPH.COM.AU

Oscar-winner Geoffrey Rush denies complaint made

STAR'S BARD BEHAVIOUR



EXCLUSIVE
JONATHAN MORAN

OSCAR-winning Australian actor Geoffrey Rush has been accused of "inappropriate behaviour" during the Sydney Theatre Company's recent production of *King Lear*.

But the star vigorously denies the allegations and says the company has never told him of any allegations of wrong doing.

The Daily Telegraph can today reveal that one of the country's most successful actors was the subject of a complaint during the production of *King Lear*.

It is understood the allegations of inappropriate behaviour occurred over several months. The local production of the classic William Shake-

spere play ran from November 2015 to January 2016 at the Roslyn Packer Theatre.

There were also several months of rehearsals.

"Sydney Theatre Company received a complaint alleging that Mr Geoffrey Rush had engaged in inappropriate behaviour," a spokeswoman said to The Daily Telegraph.

"The Company received the complaint when Mr Rush's engagement with the Company had ended. The Company continues to work with the complainant to minimise the risk of future instances of the alleged behaviour occurring in its workplace.

"The complainant has requested that their identity be withheld.

"STC respects that request and for privacy reasons, will not be making any further comments."

In a strongly worded legal letter, lawyers for Rush at HWL Ebsworth last night said he had never been involved in any "inappropriate behaviour" and that his "regard, actions and treatment of all the peo-

ple he has worked with has been impeccable beyond reproach.

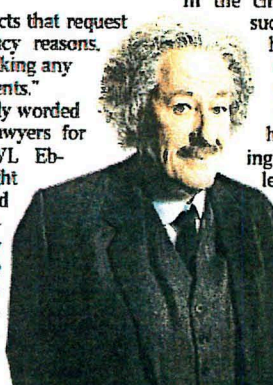
"Mr Rush has not been approached by the Sydney Theatre Company and the alleged complainant nor any representative of either of them concerning the matter you have raised," the letter states.

"Further, he has not been informed by them of the nature of the complaint and what it involves."

The letter from the legal firm's partner Nicholas Pullen goes on to say that Rush has not been involved with the Sydney Theatre Company or its representatives for a period of more than 22 months.

"In the circumstances, if such a statement has been issued by the STC it is both irresponsible and highly damaging to say the least.

"Your 'understanding' of what has occurred is, with the greatest respect, simply fishing and unfounded.



Government's recycling scheme is a big load of rubbish

FROM PAGE 1

with families expected to recoup the money by collecting refunds for recycling the bottles.

But despite the government promising to roll out 800 reverse vending machines across the state, last night there were set to be only 236 recycling points in operation when the program begins tomorrow, made up of

vending machines and over-the-counter arrangements.

Based on the government's map, more than 10 electorates across the state had no way to claim recycling refunds. Must-win seats for the government in regional NSW were missing collection points, including Orange, which the nationals spectacularly lost to the Shoot-

ers party in the 2016 by-election.

The Daily Telegraph can reveal that those vending machines that do exist don't meet national standards for disabled access. The chutes (pictured right) are 1470mm high — above the 900-1100mm required for public access. Physical Disabilities Council CEO Serena Owens said it was "crazy

the government hasn't considered legal access requirements".

A spokesman for the scheme's operator — Tomra Cleanaway — said the height was "within reach of an adult seated in a wheelchair".

One senior government member described the scheme as "shambolic", saying it was embarrassing to botch some-

thing so innocuous as a recycling scheme, and that it would hurt the government in regional seats that could determine the next election.

Small businesses in electorates on the northern border are preparing to lose revenue to shops in Queensland which does not have a container collection surcharge.



TELE0301MA - V1

DAILYTELEGRAPH.COM.AU THURSDAY NOVEMBER 30 2017

05

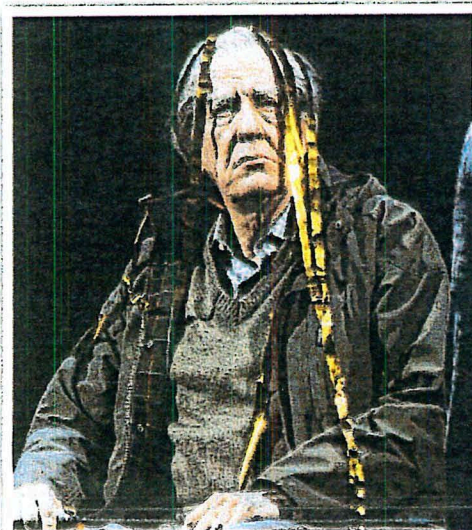
in Sydney Theatre Shakespeare production

Sydney Theatre Company received a complaint alleging that Mr Geoffrey Rush had engaged in inappropriate behaviour

STC spokeswoman

It does not warrant comment except that it is false and untrue

Lawyer for Rush
Nicholas Pullen



Clockwise from left: Rush and his 1996 Oscar, in *Twelfth Night*; receiving the Order of Australia with Governor-General Peter Cosgrove; in STC's *King Lear*; on location at Sydney Harbour on Tuesday; and (below left) as Einstein in TV series *Genius*. Main picture: Matrix Media Group

"It does not warrant comment except that it is false and untrue."

Rush has worked with the STC many times — both acting and directing productions like *Uncle Vanya*, *Oleanna*, *The Importance of Being Earnest*, *You Can't Take It With You*, *King Lear* and *The Government Inspector*.

Rush won the Academy Award for Best Actor in 1996 for his role as David Helfgott in the movie *Shine* and was nominated for the best supporting actor role two years later for *Shakespeare in Love*.

His other Oscar nominations include best actor in 2000 film *Quills* and for *The King's Speech* in 2011 in the same category.

He has found fame for becoming one of the few people to have won acting's "Triple Crown" — the Academy Award, the Primetime Emmy Award and the Tony Award.

The 66-year-old married father-of-two and Melbourne resident is also the president of the Australian Academy of Cinema Television and Arts and is expected to attend the annual AACTA Awards at The Star Event Centre next week.



Service to counsel affected Nine staff

CHANNEL Nine has opened an independent counselling service following allegations this week of sexual assault by former TV personality Don Burke as the network's boss Hugh Marks addresses staff for the first time, saying "we cannot rewrite history".

A new phone line was set up yesterday to allow people to report instances of past behaviour they would like addressed.

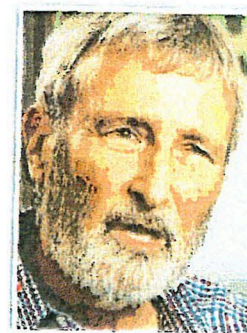
"Former Nine employees with complaints can provide their personal contact details and HR will follow up directly on a strictly confidential basis," Nine said in an email to staff.

The counselling will be provided at no cost to them, Nine said, and will support the person to "work through any issues that relate to their time" at Nine.

Mr Marks, meanwhile, told staff that allegations of harassment and misconduct by Burke was "appalling", vowing to deal with misconduct, harassment, discrimination and bullying issues "effectively".

Burke returned to Nine's *A Current Affair*, this week where he admitted to behaving like a bullying tyrant, and having "a number of affairs", but cannot remember "exact things I did 20 years ago".

He has been described as a "sexual predator" and "psychotic bully" during the 17-year run of Burke's *Backyard*. Speaking to ACA host Tracy Grimshaw, he claimed to be a victim of a "witch hunt" ignited by the Harvey Weinstein scandal.



Don Burke being interviewed on ACA.

KIDS AWAKE TO FAKE NEWS

OLDER children are becoming increasingly savvy about fake news on social media.

More than half of youngsters aged 12 to 15 use Facebook and Twitter to access news online — often clicking on stories that have been recommended by "friends" in their network or by users they "follow". But even though they like to access news in this way,

they are extremely wary about which articles they can trust.

The majority of those in this age group who read news on social media make an effort to check if it is true. Some 86 per cent make "at least one practical attempt" to check the veracity of an article.

For example, they might double check it with mainstream news sources.



Mount Agung in action.

Bali tourist relief as airport reopens

BALI'S airport reopened late yesterday and flights resumed as the amount of volcanic ash from the erupting Mt Agung volcano decreased.

After three days of closure, a decision was made late yesterday for the airport to open.

The decision brought relief to the 150,000 tourists stranded in Bali as a result of the volcano,

which began erupting last week. Yesterday almost 58,000 passengers, on 430 flights, had faced cancellations.

Authorities said while the volcanic ash plume was still reaching 1500-2000m, it had decreased compared to the previous day.

The Volcanology and Geological Hazards Mitigation Cen-

tre chief, Kasbani, said everyone living inside the exclusion zone 8-10km from the crater had been told to leave.

An eruption on Tuesday, which hurled volcanic ash more than 4000m into the air had been the biggest so far, prompting warnings that a large-scale eruption was just hours away. But that has not yet happened.

V1 - TELE3201MA